

# SULF2 Rabbit Polyclonal Antibody



CAB8803

---

## Product Information

### Size:

20uL, 50uL, 100uL, 200uL

### Observed MW:

105kDa

### Calculated MW:

100kDa

### Applications:

WB

### Reactivity:

Mouse

## Antibody Information

### Recommended dilutions:

WB 1:500 - 1:2000

### Source:

Rabbit

### Isotype:

IgG

### Purification:

Affinity purification

## Protein Background

### Immunogen information

#### Gene ID:

55959

#### Uniprot

Q8IWU5

#### Synonyms:

SULF2; HSULF-2

#### Immunogen:

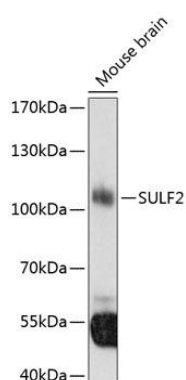
Recombinant fusion protein containing a sequence corresponding to amino acids 726-870 of human SULF2 (NP\_061325.1).

#### Storage:

Store at -20°C. Avoid freeze / thaw cycles. Buffer: PBS with 0.02% sodium azide, 50% glycerol, pH7.3.

## Product Images

---



Western blot analysis of extracts of mouse brain, using SULF2 antibody (CAB8803) at 1:3000 dilution. Secondary antibody: HRP Goat Anti-Rabbit IgG (H+L) (CABS014) at 1:10000 dilution. Lysates/proteins: 25ug per lane. Blocking buffer: 3% nonfat dry milk in TBST. Detection: ECL Basic Kit (CABM00020). Exposure time: 10s.