

SS18L1 Rabbit Polyclonal Antibody



CAB8822

Product Information

Size:

20uL, 50uL, 100uL, 200uL

Observed MW:

55kDa

Calculated MW:

29kDa/33kDa/40kDa/42kDa/
43kDa

Applications:

WB IHC IF

Reactivity:

Human, Mouse, Rat

Antibody Information

Recommended dilutions:

WB 1:500 - 1:2000 IHC 1:50
- 1:200 IF 1:50 - 1:200

Source:

Rabbit

Isotype:

IgG

Purification:

Affinity purification

Protein Background

This gene encodes a calcium-responsive transactivator which is an essential subunit of a neuron-specific chromatin-remodeling complex. The structure of this gene is similar to that of the SS18 gene. Mutations in this gene are involved in amyotrophic lateral sclerosis (ALS). Alternatively spliced transcript variants have been found for this gene.

Immunogen information

Gene ID:

26039

Uniprot

O75177

Synonyms:

SS18L1; CREST; LP2261

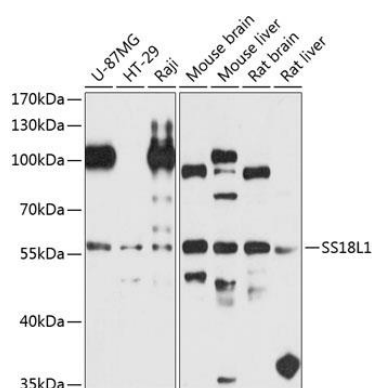
Immunogen:

Recombinant fusion protein containing a sequence corresponding to amino acids 90-270 of human SS18L1 (NP_945173.1).

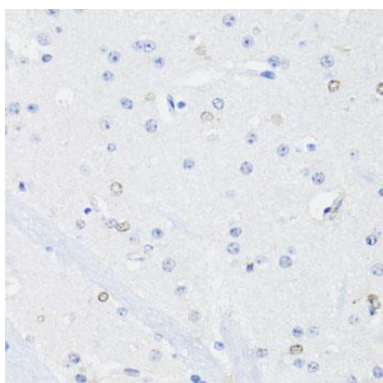
Storage:

Store at -20°C. Avoid freeze / thaw cycles. Buffer: PBS with 0.02% sodium azide, 50% glycerol, pH7.3.

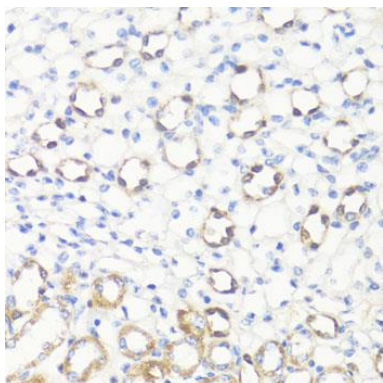
Product Images



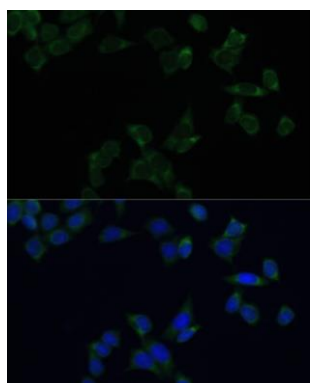
Western blot analysis of extracts of various cell lines, using SS18L1 antibody (CAB8822) at 1:1000 dilution. Secondary antibody: HRP Goat Anti-Rabbit IgG (H+L) (CABS014) at 1:10000 dilution. Lysates/proteins: 25ug per lane. Blocking buffer: 3% nonfat dry milk in TBST. Detection: ECL Basic Kit (CABM00020). Exposure time: 90s.



Immunohistochemistry of paraffin-embedded mouse brain using SS18L1 antibody (CAB8822) at dilution of 1:100 (40x lens).



Immunohistochemistry of paraffin-embedded mouse kidney using SS18L1 antibody (CAB8822) at dilution of 1:100 (40x lens).



Immunofluorescence analysis of HeLa cells using SS18L1 antibody (CAB8822) at dilution of 1:100. Blue: DAPI for nuclear staining.