

SCFD1 Rabbit Polyclonal Antibody



CAB8835

Product Information

Size:

20uL, 50uL, 100uL, 200uL

Observed MW:

72kDa

Calculated MW:

62kDa/65kDa/72kDa

Applications:

WB IHC

Reactivity:

Human, Mouse, Rat

Antibody Information

Recommended dilutions:

WB 1:500 - 1:2000 IHC 1:50
- 1:200

Source:

Rabbit

Isotype:

IgG

Purification:

Affinity purification

Protein Background

Immunogen information

Gene ID:

23256

Uniprot

Q8WVM8

Synonyms:

SCFD1; C14orf163; RA410; SLY1; SLY1P; STXBP1L2

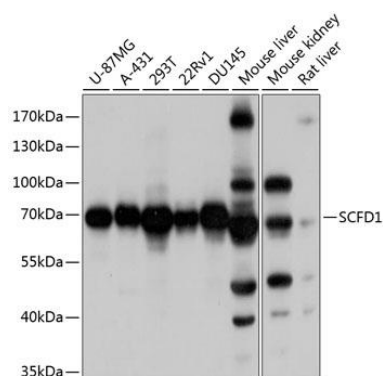
Immunogen:

Recombinant fusion protein containing a sequence corresponding to amino acids 373-642 of human SCFD1 (NP_057190.2).

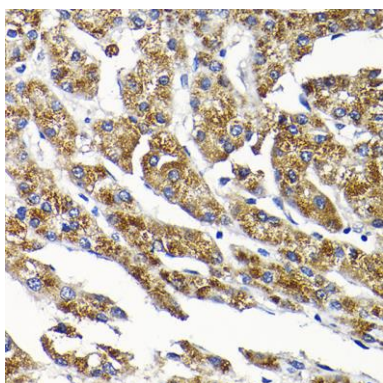
Storage:

Store at -20°C. Avoid freeze / thaw cycles. Buffer: PBS with 0.02% sodium azide, 50% glycerol, pH7.3.

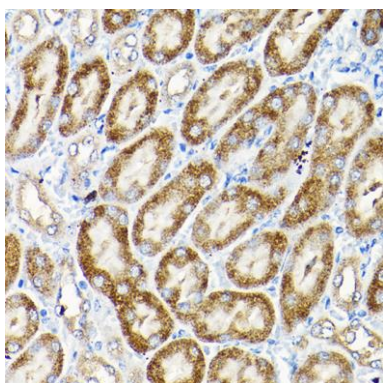
Product Images



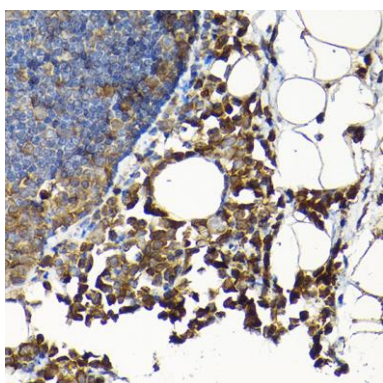
Western blot analysis of extracts of various cell lines, using SCFD1 antibody (CAB8835) at 1:1000 dilution. Secondary antibody: HRP Goat Anti-Rabbit IgG (H+L) (CABS014) at 1:10000 dilution. Lysates/proteins: 25ug per lane. Blocking buffer: 3% nonfat dry milk in TBST. Detection: ECL Basic Kit (CABM00020). Exposure time: 1s.



Immunohistochemistry of paraffin-embedded human liver cancer using SCFD1 Rabbit pAb (CAB8835) at dilution of 1:200 (40x lens).



Immunohistochemistry of paraffin-embedded mouse kidney using SCFD1 Rabbit pAb (CAB8835) at dilution of 1:200 (40x lens).



Immunohistochemistry of paraffin-embedded rat lung using SCFD1 Rabbit pAb (CAB8835) at dilution of 1:200 (40x lens).