

PTPRS Rabbit Polyclonal Antibody



CAB8866

Product Information

Size:

20uL, 50uL, 100uL, 200uL

Observed MW:

220kDa

Calculated MW:

168kDa/171kDa/212kDa/214kDa/215kDa/217kDa

Applications:

WB

Reactivity:

Rat

Protein Background

The protein encoded by this gene is a member of the protein tyrosine phosphatase (PTP) family. PTPs are known to be signaling molecules that regulate a variety of cellular processes including cell growth, differentiation, mitotic cycle, and oncogenic transformation. This PTP contains an extracellular region, a single transmembrane segment and two tandem intracytoplasmic catalytic domains, and thus represents a receptor-type PTP. The extracellular region of this protein is composed of multiple Ig-like and fibronectin type III-like domains. Studies of the similar gene in mice suggested that this PTP may be involved in cell-cell interaction, primary axonogenesis, and axon guidance during embryogenesis. This PTP has been also implicated in the molecular control of adult nerve repair. Four alternatively spliced transcript variants, which encode distinct proteins, have been reported.

Immunogen information

Gene ID:

5802

Uniprot

Q13332

Antibody Information

Recommended dilutions:

WB 1:500 - 1:2000

Source:

Rabbit

Isotype:

IgG

Purification:

Affinity purification

Synonyms:

PTPRS; PTPSIGMA; R-PTP-S; R-PTP-sigma

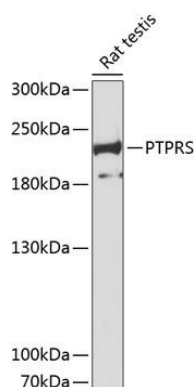
Immunogen:

Recombinant fusion protein containing a sequence corresponding to amino acids 1100-1280 of human PTPRS (NP_002841.3).

Storage:

Store at -20°C. Avoid freeze / thaw cycles. Buffer: PBS with 0.02% sodium azide, 50% glycerol, pH7.3.

Product Images



Western blot analysis of extracts of rat testis, using PTPRS antibody (CAB8866) at 1:3000 dilution. Secondary antibody: HRP Goat Anti-Rabbit IgG (H+L) (CABS014) at 1:10000 dilution. Lysates/proteins: 25ug per lane. Blocking buffer: 3% nonfat dry milk in TBST. Detection: ECL Basic Kit (CABM00020). Exposure time: 90s.