

ARL8B Rabbit Polyclonal Antibody



CAB8869

Product Information

Size:

20uL, 50uL, 100uL, 200uL

Observed MW:

21kDa

Calculated MW:

18kDa/21kDa

Applications:

WB IF

Reactivity:

Human, Mouse

Antibody Information

Recommended dilutions:

WB 1:500 - 1:3000 IF 1:50 - 1:200

Source:

Rabbit

Isotype:

IgG

Purification:

Affinity purification

Protein Background

Immunogen information

Gene ID:

55207

Uniprot

Q9NVJ2

Synonyms:

ARL8B; ARL10C; Gie1

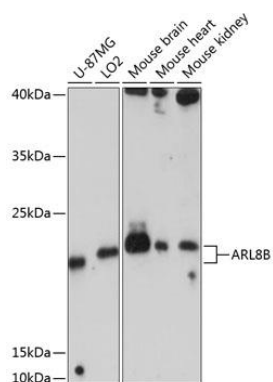
Immunogen:

Recombinant fusion protein containing a sequence corresponding to amino acids 127-186 of human ARL8B (NP_060654.1).

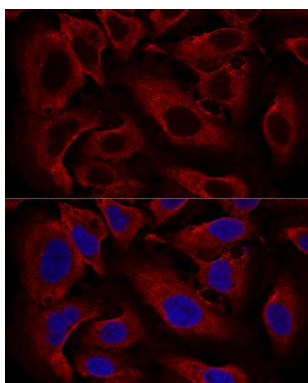
Storage:

Store at -20°C. Avoid freeze / thaw cycles. Buffer: PBS with 0.02% sodium azide, 50% glycerol, pH7.3.

Product Images



Western blot analysis of extracts of various cell lines, using ARL8B antibody (CAB8869) at 1:3000 dilution. Secondary antibody: HRP Goat Anti-Rabbit IgG (H+L) (CABS014) at 1:10000 dilution. Lysates/proteins: 25ug per lane. Blocking buffer: 3% nonfat dry milk in TBST. Detection: ECL Enhanced Kit (CABM00021). Exposure time: 30s.



Confocal immunofluorescence analysis of U2OS cells using ARL8B Polyclonal Antibody (CAB8869) at dilution of 1:100. Blue: DAPI for nuclear staining.