

Arp2 Rabbit Monoclonal Antibody



CAB8876

Product Information

Size:

20uL, 50uL, 100uL, 200uL

Observed MW:

45KDa

Calculated MW:

37kDa

Applications:

WB

Reactivity:

Human, Mouse, Rat

Protein Background

The specific function of this gene has not yet been determined; however, the protein it encodes is known to be a major constituent of the ARP2/3 complex. This complex is located at the cell surface and is essential to cell shape and motility through lamellipodial actin assembly and protrusion. Two transcript variants encoding different isoforms have been found for this gene. [provided by RefSeq, Jul 2008]

Immunogen information

Gene ID:

10097

Uniprot

P61160

Synonyms:

ARP2

Antibody Information

Recommended dilutions:

WB 1:500 - 1:2000

Source:

Rabbit

Isotype:

IgG

Purification:

Affinity purification

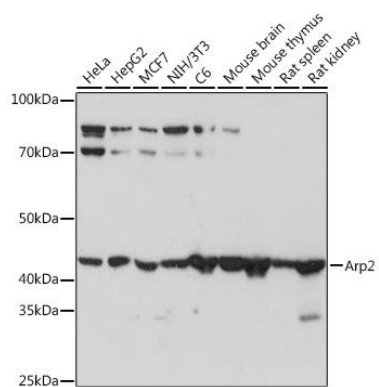
Immunogen:

A synthesized peptide derived from human Arp2

Storage:

Store at -20°C. Avoid freeze / thaw cycles. Buffer: PBS with 0.02% sodium azide, 0.05% BSA, 50% glycerol, pH7.3.

Product Images



Western blot - Arp2 Rabbit mAb (CAB8876)