

MARVELD2 Rabbit Polyclonal Antibody



CAB8909

Product Information

Size:

20uL, 50uL, 100uL, 200uL

Observed MW:

64kDa

Calculated MW:

51kDa/62kDa/64kDa

Applications:

WB IHC

Reactivity:

Human, Mouse, Rat

Antibody Information

Recommended dilutions:

WB 1:500 - 1:2000 IHC 1:50
- 1:200

Source:

Rabbit

Isotype:

IgG

Purification:

Affinity purification

Protein Background

The protein encoded by this gene is a membrane protein found at the tight junctions between epithelial cells. The encoded protein helps establish epithelial barriers such as those in the organ of Corti, where these barriers are required for normal hearing. Defects in this gene are a cause of deafness autosomal recessive type 49 (DFNB49). Two transcript variants encoding different isoforms have been found for this gene.

Immunogen information

Gene ID:

153562

Uniprot

Q8N4S9

Synonyms:

MARVELD2; DFNB49; MARVD2; MRVLDC2; Tric

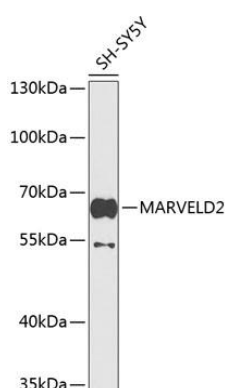
Immunogen:

A synthetic peptide corresponding to a sequence within amino acids 200-300 of human MARVELD2 (NP_001033692.2).

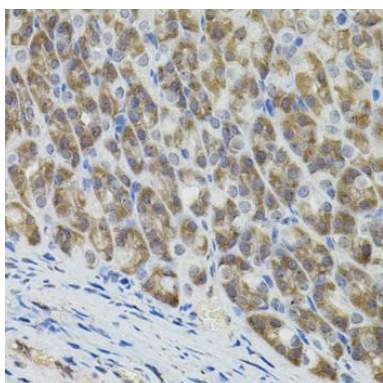
Storage:

Store at -20°C. Avoid freeze / thaw cycles. Buffer: PBS with 0.02% sodium azide, 50% glycerol, pH7.3.

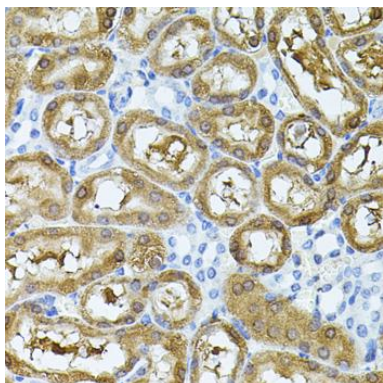
Product Images



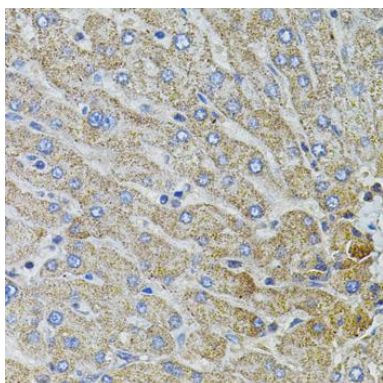
Western blot analysis of extracts of SH-SY5Y cells, using MARVELD2 antibody (CAB8909) at 1:1000 dilution. Secondary antibody: HRP Goat Anti-Rabbit IgG (H+L) (CABS014) at 1:10000 dilution. Lysates/proteins: 25ug per lane. Blocking buffer: 3% nonfat dry milk in TBST. Detection: ECL Basic Kit (CABM00020). Exposure time: 90s.



Immunohistochemistry of paraffin-embedded mouse stomach using MARVELD2 antibody (CAB8909) (40x lens).



Immunohistochemistry of paraffin-embedded rat kidney using MARVELD2 antibody (CAB8909) (40x lens).



Immunohistochemistry of paraffin-embedded human liver damage using MARVELD2 antibody (CAB8909) (40x lens).