

# GYS1 Rabbit Monoclonal Antibody



CAB8912

## Product Information

### Size:

20uL, 50uL, 100uL, 200uL

### Observed MW:

85KDa

### Calculated MW:

84kDa

### Applications:

WB

### Reactivity:

Human, Mouse, Rat

## Protein Background

The protein encoded by this gene catalyzes the addition of glucose monomers to the growing glycogen molecule through the formation of alpha-1, 4-glycoside linkages. Mutations in this gene are associated with muscle glycogen storage disease. Alternatively spliced transcript variants encoding different isoforms have been found for this gene.[provided by RefSeq, Sep 2009]

## Immunogen information

### Gene ID:

2997

### Uniprot

P13807

### Synonyms:

GSY; GYS

## Antibody Information

### Recommended dilutions:

WB 1:500 - 1:2000

### Source:

Rabbit

### Isotype:

IgG

### Purification:

Affinity purification

### Immunogen:

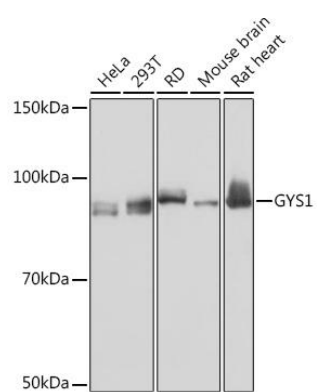
A synthesized peptide derived from human Glycogen synthase

### Storage:

Store at -20°C. Avoid freeze / thaw cycles. Buffer: PBS with 0.02% sodium azide, 0.05% BSA, 50% glycerol, pH7.3.

## Product Images

---



Western blot - GYS1 Rabbit mAb (CAB8912)