

# ITM2C Rabbit Polyclonal Antibody



CAB8915

---

## Product Information

### Size:

20uL, 50uL, 100uL, 200uL

### Observed MW:

30kDa

### Calculated MW:

24kDa/25kDa/30kDa

### Applications:

WB

### Reactivity:

Human

## Antibody Information

### Recommended dilutions:

WB 1:500 - 1:2000

### Source:

Rabbit

### Isotype:

IgG

### Purification:

Affinity purification

## Protein Background

### Immunogen information

#### Gene ID:

81618

#### Uniprot

Q9NQX7

#### Synonyms:

ITM2C; BRI3; BRICD2C; E25; E25C; ITM3

#### Immunogen:

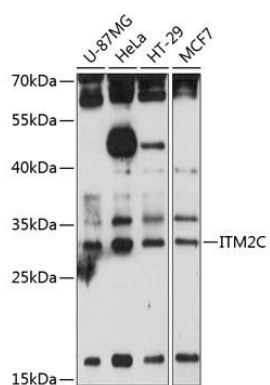
Recombinant fusion protein containing a sequence corresponding to amino acids 1-220 of human ITM2C (NP\_001012532.1).

#### Storage:

Store at -20°C. Avoid freeze / thaw cycles. Buffer: PBS with 0.02% sodium azide, 50% glycerol, pH7.3.

## Product Images

---



Western blot analysis of extracts of various cell lines, using ITM2C antibody (CAB8915) at 1:3000 dilution. Secondary antibody: HRP Goat Anti-Rabbit IgG (H+L) (CABS014) at 1:10000 dilution. Lysates/proteins: 25ug per lane. Blocking buffer: 3% nonfat dry milk in TBST. Detection: ECL Enhanced Kit (CABM00021). Exposure time: 30s.