

ACTN2 Rabbit Monoclonal Antibody



CAB8939

Product Information

Size:

20uL, 50uL, 100uL, 200uL

Observed MW:

104kDa

Calculated MW:

103kDa

Applications:

WB IF

Reactivity:

Human, Mouse, Rat

Protein Background

Alpha actinins belong to the spectrin gene superfamily which represents a diverse group of cytoskeletal proteins, including the alpha and beta spectrins and dystrophins. Alpha actinin is an actin-binding protein with multiple roles in different cell types. In nonmuscle cells, the cytoskeletal isoform is found along microfilament bundles and adherens-type junctions, where it is involved in binding actin to the membrane. In contrast, skeletal, cardiac, and smooth muscle isoforms are localized to the Z-disc and analogous dense bodies, where they help anchor the myofibrillar actin filaments. This gene encodes a muscle-specific, alpha actinin isoform that is expressed in both skeletal and cardiac muscles. Several transcript variants encoding different isoforms have been found for this gene. [provided by RefSeq, May 2013]

Immunogen information

Gene ID:

88

Uniprot

P35609

Antibody Information

Recommended dilutions:

WB 1:500 - 1:2000 IF 1:50 - 1:200

Source:

Rabbit

Synonyms:

CMD1AA; CMH23

Immunogen:

A synthesized peptide derived from human ACTN2

Isotype:

IgG

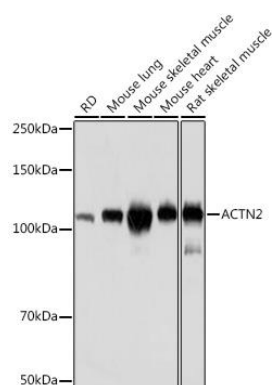
Storage:

Store at -20°C. Avoid freeze / thaw cycles. Buffer: PBS with 0.02% sodium azide, 0.05% BSA, 50% glycerol, pH7.3.

Purification:

Affinity purification

Product Images



Western blot - ACTN2 Rabbit mAb (CAB8939)