

SPAG8 Rabbit Polyclonal Antibody



CAB8943

Product Information

Size:

20uL, 50uL, 100uL, 200uL

Observed MW:

45kDa

Calculated MW:

44kDa/51kDa/53kDa

Applications:

WB IHC

Reactivity:

Mouse, Rat

Antibody Information

Recommended dilutions:

WB 1:500 - 1:2000 IHC 1:50
- 1:200

Source:

Rabbit

Isotype:

IgG

Purification:

Affinity purification

Protein Background

The correlation of anti-sperm antibodies with cases of unexplained infertility implicates a role for these antibodies in blocking fertilization. Improved diagnosis and treatment of immunologic infertility, as well as identification of proteins for targeted contraception, are dependent on the identification and characterization of relevant sperm antigens. The protein encoded by this gene is recognized by sperm agglutinating antibodies from an infertile woman. This protein is localized in germ cells of the testis at all stages of spermatogenesis and is localized to the acrosomal region of mature spermatozoa. This protein interacts with ACT (activator of CREM in testis) and may play a role in CREM (cAMP response element modulator)-ACT-mediated gene transcription during spermatogenesis. This protein may also play a role in spermatogenesis by regulating microtubule formation and cell division. Alternatively spliced variants that encode different protein isoforms have been described but the full-length sequences of only two have been determined.

Immunogen information

Gene ID:

26206

Uniprot

Q99932

Synonyms:

SPAG8; BS-84; CILD28; CT142; HSD-1; SMP1; SPAG3; hSMP-1

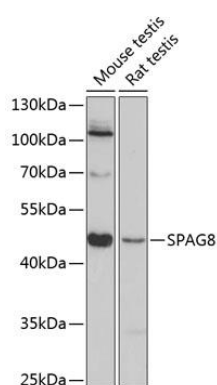
Immunogen:

Recombinant fusion protein containing a sequence corresponding to amino acids 220-420 of human SPAG8 (NP_758516.1).

Storage:

Store at -20°C. Avoid freeze / thaw cycles. Buffer: PBS with 0.02% sodium azide, 50% glycerol, pH7.3.

Product Images



Western blot analysis of extracts of various cell lines, using SPAG8 antibody (CAB8943) at 1:3000 dilution. Secondary antibody: HRP Goat Anti-Rabbit IgG (H+L) (CABS014) at 1:10000 dilution. Lysates/proteins: 25ug per lane. Blocking buffer: 3% nonfat dry milk in TBST. Detection: ECL Basic Kit (CABM00020). Exposure time: 90s.