

Skp1 Rabbit Monoclonal Antibody



CAB9021

Product Information

Size:

20uL, 50uL, 100uL, 200uL

Observed MW:

20KDa

Calculated MW:

19kDa

Applications:

WB IF

Reactivity:

Human, Mouse, Rat

Protein Background

This gene encodes a component of SCF complexes, which are composed of this protein, cullin 1, a ring-box protein, and one member of the F-box family of proteins. This protein binds directly to the F-box motif found in F-box proteins. SCF complexes are involved in the regulated ubiquitination of specific protein substrates, which targets them for degradation by the proteasome. Specific F-box proteins recognize different target protein(s), and many specific SCF substrates have been identified including regulators of cell cycle progression and development. Studies have also characterized the protein as an RNA polymerase II elongation factor. Alternative splicing of this gene results in two transcript variants. A related pseudogene has been identified on chromosome 7. [provided by RefSeq, Jul 2008]

Immunogen information

Gene ID:

6500

Uniprot

P63208

Antibody Information

Recommended dilutions:

WB 1:500 - 1:2000 IF 1:50 - 1:200

Source:

Rabbit

Synonyms:

EMC19; OCP-II; OCP2; SKP1A; TCEB1L; p19A

Immunogen:

A synthesized peptide derived from human Skp1

Isotype:

IgG

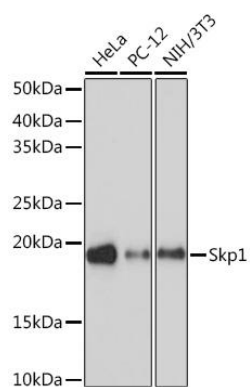
Storage:

Store at -20°C. Avoid freeze / thaw cycles. Buffer: PBS with 0.02% sodium azide, 0.05% BSA, 50% glycerol, pH7.3.

Purification:

Affinity purification

Product Images



Western blot - Skp1 Rabbit mAb (CAB9021)