

# ZFYVE9 Rabbit Polyclonal Antibody



CAB9041

---

## Product Information

### Size:

20uL, 50uL, 100uL, 200uL

### Observed MW:

156kDa

### Calculated MW:

83kDa/150kDa/156kDa

### Applications:

WB IF

### Reactivity:

Human

## Antibody Information

### Recommended dilutions:

WB 1:200 - 1:2000 IF 1:50 - 1:200

### Source:

Rabbit

### Isotype:

IgG

### Purification:

Affinity purification

## Protein Background

This gene encodes a double zinc finger motif-containing protein that participates in the transforming growth factor-beta (TGFB) signalling pathway. The encoded protein interacts directly with SMAD2 and SMAD3, and recruits SMAD2 to the TGFB receptor. There are multiple pseudogenes for this gene on chromosomes 2, 15, and X. Alternative splicing results in multiple transcript variants.

## Immunogen information

### Gene ID:

9372

### Uniprot

O95405

### Synonyms:

ZFYVE9; MADHIP; NSP; PPP1R173; SARA; SMADIP

### Immunogen:

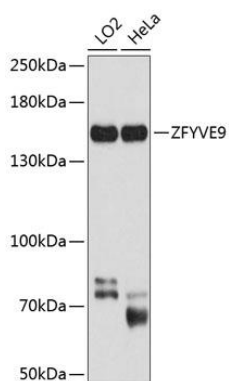
Recombinant fusion protein containing a sequence corresponding to amino acids 1-260 of human ZFYVE9 (NP\_004790.2).

### Storage:

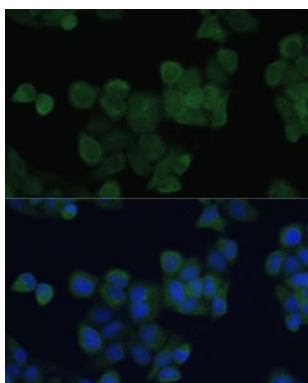
Store at -20°C. Avoid freeze / thaw cycles. Buffer: PBS with 0.02% sodium azide, 50% glycerol, pH7.3.

## Product Images

---



Western blot analysis of extracts of various cell lines, using ZFYVE9 antibody (CAB9041) at 1:1000 dilution. Secondary antibody: HRP Goat Anti-Rabbit IgG (H+L) (CABS014) at 1:10000 dilution. Lysates/proteins: 25ug per lane. Blocking buffer: 3% nonfat dry milk in TBST. Detection: ECL Basic Kit (CABM00020). Exposure time: 20s.



Immunofluorescence analysis of HeLa cells using ZFYVE9 antibody (CAB9041) at dilution of 1:100. Blue: DAPI for nuclear staining.