

GPM6A Rabbit Polyclonal Antibody



CAB9066

Product Information

Size:

20uL, 50uL, 100uL, 200uL

Observed MW:

31kDa

Calculated MW:

29kDa/30kDa/31kDa

Applications:

WB IHC

Reactivity:

Human, Mouse

Antibody Information

Recommended dilutions:

WB 1:500 - 1:2000 IHC 1:50 - 1:200

Source:

Rabbit

Isotype:

IgG

Purification:

Affinity purification

Protein Background

Immunogen information

Gene ID:

2823

Uniprot

P51674

Synonyms:

GPM6A; GPM6; M6A

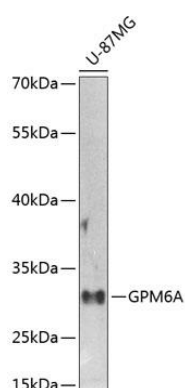
Immunogen:

A synthetic peptide corresponding to a sequence within amino acids 1-100 of human GPM6A (NP_005268.1).

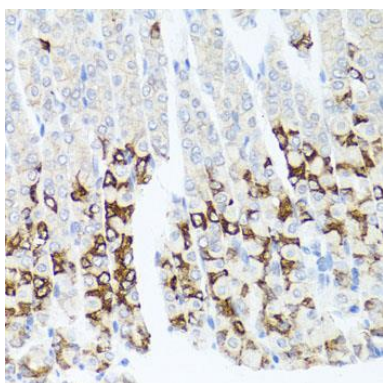
Storage:

Store at -20°C. Avoid freeze / thaw cycles. Buffer: PBS with 0.02% sodium azide, 50% glycerol, pH7.3.

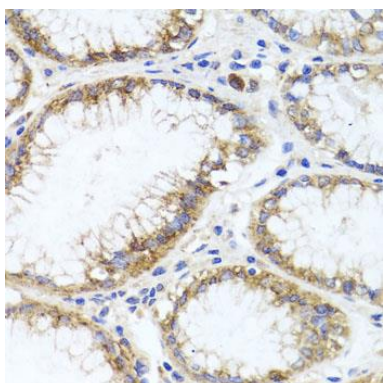
Product Images



Western blot analysis of extracts of U-87MG cells, using GPM6A antibody (CAB9066) at 1:1000 dilution. Secondary antibody: HRP Goat Anti-Rabbit IgG (H+L) (CABS014) at 1:10000 dilution. Lysates/proteins: 25ug per lane. Blocking buffer: 3% nonfat dry milk in TBST. Detection: ECL Enhanced Kit (CABM00021). Exposure time: 30s.



Immunohistochemistry of paraffin-embedded mouse stomach using GPM6A antibody (CAB9066) at dilution of 1:100 (40x lens).



Immunohistochemistry of paraffin-embedded human stomach using GPM6A antibody (CAB9066) at dilution of 1:100 (40x lens).