

FKBP1B Rabbit Polyclonal Antibody



CAB9074

Product Information

Size:

100uL, 200uL

Observed MW:

13kDa

Calculated MW:

8kDa/11kDa

Applications:

WB IHC IF

Reactivity:

Human, Mouse, Rat

Protein Background

The protein encoded by this gene is a member of the immunophilin protein family, which play a role in immunoregulation and basic cellular processes involving protein folding and trafficking. This encoded protein is a cis-trans prolyl isomerase that binds the immunosuppressants FK506 and rapamycin. It is highly similar to the FK506-binding protein 1A. Its physiological role is thought to be in excitation-contraction coupling in cardiac muscle. There are two alternatively spliced transcript variants of this gene encoding different isoforms.

Immunogen information

Gene ID:

2281

Uniprot

P68106

Synonyms:

FKBP1B; FKBP12.6; FKBP1L; OTK4; PKBP1L; PPIase

Antibody Information

Recommended dilutions:

WB 1:500 - 1:1000 IHC 1:20
- 1:50 IF 1:20 - 1:50

Source:

Rabbit

Isotype:

IgG

Purification:

Affinity purification

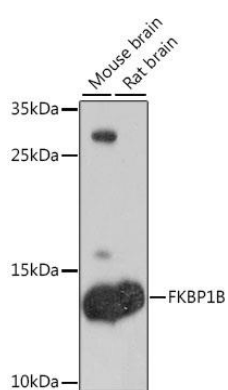
Immunogen:

A synthetic Peptide of human FKBP1B

Storage:

Store at -20°C. Avoid freeze / thaw cycles. Buffer: PBS with 0.02% sodium azide, 50% glycerol, pH7.3.

Product Images



Western blot analysis of extracts of various cell lines, using FKBP1B antibody (CAB9074) at 1:1000 dilution. Secondary antibody: HRP Goat Anti-Rabbit IgG (H+L) (CABS014) at 1:10000 dilution. Lysates/proteins: 25ug per lane. Blocking buffer: 3% nonfat dry milk in TBST. Detection: ECL Basic Kit (CABM00020). Exposure time: 10s.