

# KHSRP Rabbit Monoclonal Antibody



CAB9075

---

## Product Information

### Size:

20uL, 50uL, 100uL, 200uL

### Observed MW:

82KDa

### Calculated MW:

82kDa

### Applications:

WB IHC

### Reactivity:

Human, Mouse, Rat

## Protein Background

The KHSRP gene encodes a multifunctional RNA-binding protein implicated in a variety of cellular processes, including transcription, alternative pre-mRNA splicing, and mRNA localization (Min et al., 1997 [PubMed 9136930]; Gherzi et al., 2004 [PubMed 15175153]).[supplied by OMIM, Apr 2010]

## Immunogen information

### Gene ID:

8570

### Uniprot

Q92945

### Synonyms:

FBP2; FUBP2; KSRP

## Antibody Information

### Recommended dilutions:

WB 1:500 - 1:2000 IHC 1:50  
- 1:200

### Source:

Rabbit

### Isotype:

IgG

### Purification:

Affinity purification

### Immunogen:

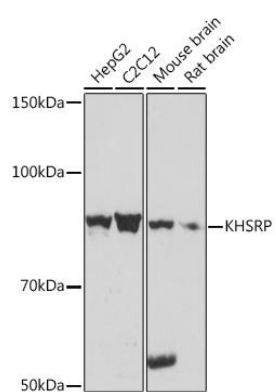
A synthesized peptide derived from human KHSRP

### Storage:

Store at -20°C. Avoid freeze / thaw cycles. Buffer: PBS with 0.02% sodium azide, 0.05% BSA, 50% glycerol, pH7.3.

## Product Images

---



Western blot - KHSRP Rabbit mAb (CAB9075)