

EPB41L2 Rabbit Polyclonal Antibody



CAB9101

Product Information

Size:

20uL, 50uL, 100uL, 200uL

Observed MW:

180kDa

Calculated MW:

76kDa/83kDa/95kDa/112kDa

Applications:

WB IF

Reactivity:

Human

Antibody Information

Recommended dilutions:

WB 1:200 - 1:2000 IF 1:50 - 1:200

Source:

Rabbit

Isotype:

IgG

Purification:

Affinity purification

Protein Background

Immunogen information

Gene ID:

2037

Uniprot

O43491

Synonyms:

EPB41L2; 4.1-G; 4.1G

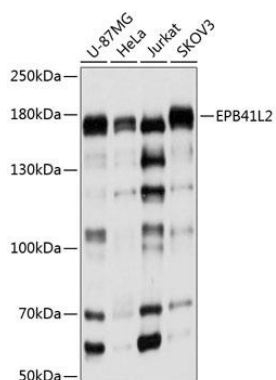
Immunogen:

Recombinant fusion protein containing a sequence corresponding to amino acids 1-210 of human EPB41L2 (NP_001186317.1).

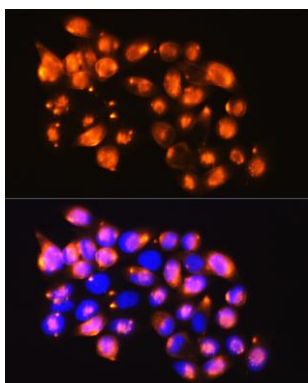
Storage:

Store at -20°C. Avoid freeze / thaw cycles. Buffer: PBS with 0.02% sodium azide, 50% glycerol, pH7.3.

Product Images



Western blot analysis of extracts of various cell lines, using EPB41L2 antibody (CAB9101) at 1:1000 dilution. Secondary antibody: HRP Goat Anti-Rabbit IgG (H+L) (CABS014) at 1:10000 dilution. Lysates/proteins: 25ug per lane. Blocking buffer: 3% nonfat dry milk in TBST. Detection: ECL Basic Kit (CABM00020). Exposure time: 5s.



Immunofluorescence analysis of HeLa cells using EPB41L2 antibody (CAB9101) at dilution of 1:100. Blue: DAPI for nuclear staining.