

# RNASEH1 Rabbit Polyclonal Antibody



CAB9116

## Product Information

### Size:

20uL, 50uL, 100uL, 200uL

### Observed MW:

37kDa

### Calculated MW:

32kDa

### Applications:

WB IHC

### Reactivity:

Human, Mouse, Rat

## Antibody Information

### Recommended dilutions:

WB 1:500 - 1:2000 IHC

1:100 - 1:200

### Source:

Rabbit

### Isotype:

IgG

### Purification:

Affinity purification

## Protein Background

This gene encodes an endonuclease that specifically degrades the RNA of RNA-DNA hybrids and is necessary for DNA replication and repair. This enzyme is present in both mitochondria and nuclei, which are resulted from translation of a single mRNA with two in-frame initiation start codons. The use of the first start codon produces the mitochondrial isoform and the use of the second start codon produces the nuclear isoform. The production of the mitochondrial isoform is modulated by an upstream open reading frame (uORF) which overlaps the first initiation start codon in human. An alternately spliced transcript variant has been found which encodes a shorter isoform. This gene has three pseudogenes; two of them are at different locations of chromosome 17 and one of them is on chromosome 1q32.2.

## Immunogen information

### Gene ID:

246243

### Uniprot

O60930

### Synonyms:

RNASEH1; H1RNA; PEOB2; RNH1

### Immunogen:

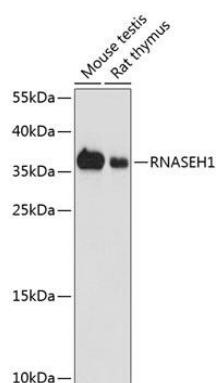
Recombinant fusion protein containing a sequence corresponding to amino acids 1-286 of human RNASEH1 (NP\_002927.2).

### Storage:

Store at -20°C. Avoid freeze / thaw cycles. Buffer: PBS with 0.02% sodium azide, 50% glycerol, pH7.3.

## Product Images

---



Western blot analysis of extracts of various cell lines, using RNASEH1 antibody (CAB9116) at 1:1000 dilution. Secondary antibody: HRP Goat Anti-Rabbit IgG (H+L) (CABS014) at 1:10000 dilution. Lysates/proteins: 25ug per lane. Blocking buffer: 3% nonfat dry milk in TBST. Detection: ECL Basic Kit (CABM00020). Exposure time: 10s.