

# GPCR / LGR6 Rabbit Monoclonal Antibody



CAB9128

---

## Product Information

### Size:

20uL, 50uL, 100uL, 200uL

### Observed MW:

104KDa

### Calculated MW:

104kDa

### Applications:

WB IF

### Reactivity:

Human, Rat

## Protein Background

This gene encodes a member of the leucine-rich repeat-containing subgroup of the G protein-coupled 7-transmembrane protein superfamily. The encoded protein is a glycoprotein hormone receptor with a large N-terminal extracellular domain that contains leucine-rich repeats important for the formation of a horseshoe-shaped interaction motif for ligand binding. Alternative splicing of this gene results in multiple transcript variants. [provided by RefSeq, Jul 2008]

## Immunogen information

### Gene ID:

59352

### Uniprot

Q9HBX8

### Synonyms:

GPCR; VTS20631

## Antibody Information

### Recommended dilutions:

WB 1:500 - 1:2000 IF 1:50 - 1:200

### Source:

Rabbit

### Isotype:

IgG

### Purification:

Affinity purification

### Immunogen:

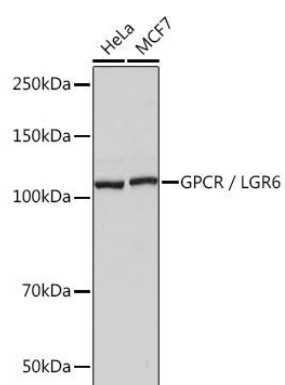
A synthesized peptide derived from human GPCR / LGR6

### Storage:

Store at -20°C. Avoid freeze / thaw cycles. Buffer: PBS with 0.02% sodium azide, 0.05% BSA, 50% glycerol, pH7.3.

## Product Images

---



Western blot - GPCR / LGR6 Rabbit mAb (CAB9128)