

# Hemopexin Rabbit Monoclonal Antibody



CAB9133

---

## Product Information

### Size:

20uL, 50uL, 100uL, 200uL

### Observed MW:

70KDa

### Calculated MW:

70-75kDa

### Applications:

WB IHC IF

### Reactivity:

Human, Mouse, Rat

## Protein Background

This gene encodes a plasma glycoprotein that binds heme with high affinity. The encoded protein is an acute phase protein that transports heme from the plasma to the liver and may be involved in protecting cells from oxidative stress. [provided by RefSeq, Apr 2009]

## Immunogen information

### Gene ID:

3263

### Uniprot

P02790

### Synonyms:

HX

## Antibody Information

### Recommended dilutions:

WB 1:500 - 1:2000 IHC 1:50  
- 1:200 IF 1:50 - 1:200

### Source:

Rabbit

### Isotype:

IgG

### Purification:

Affinity purification

### Immunogen:

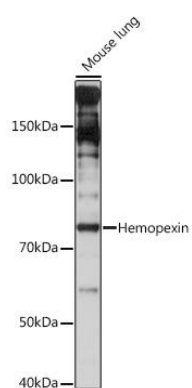
A synthesized peptide derived from human Hemopexin

### Storage:

Store at -20°C. Avoid freeze / thaw cycles. Buffer: PBS with 0.02% sodium azide, 0.05% BSA, 50% glycerol, pH7.3.

## Product Images

---



Western blot - Hemopexin Rabbit mAb (CAB9133)