

PHB2 Rabbit Monoclonal Antibody



CAB9144

Product Information

Size:

20uL, 50uL, 100uL, 200uL

Observed MW:

33KDa

Calculated MW:

30kDa

Applications:

WB IHC IF

Reactivity:

Human, Mouse, Rat

Antibody Information

Recommended dilutions:

WB 1:500 - 1:2000 IHC 1:50
- 1:200 IF 1:50 - 1:200

Source:

Rabbit

Isotype:

IgG

Purification:

Affinity purification

Protein Background

Immunogen information

Gene ID:

11331

Uniprot

Q99623

Synonyms:

BAP; BCAP37; Bap37; PNAS-141; REA; hBAP; p22; PHB2

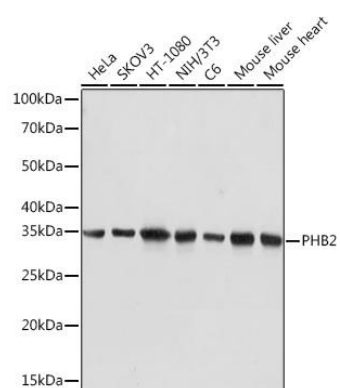
Immunogen:

A synthesized peptide derived from human PHB2

Storage:

Store at -20°C. Avoid freeze / thaw cycles. Buffer: PBS with 0.02% sodium azide, 0.05% BSA, 50% glycerol, pH7.3.

Product Images



Western blot - PHB2 Rabbit mAb (CAB9144)