

14-3-3 beta/zeta Rabbit Monoclonal Antibody



CAB9152

Product Information

Size:

20uL, 50uL, 100uL, 200uL

Observed MW:

28KDa

Calculated MW:

28kDa

Applications:

WB IF

Reactivity:

Human, Mouse, Rat

Protein Background

This gene encodes a protein belonging to the 14-3-3 family of proteins, members of which mediate signal transduction by binding to phosphoserine-containing proteins. This highly conserved protein family is found in both plants and mammals. The encoded protein has been shown to interact with RAF1 and CDC25 phosphatases, suggesting that it may play a role in linking mitogenic signaling and the cell cycle machinery. Two transcript variants, which encode the same protein, have been identified for this gene. [provided by RefSeq, Jul 2008]

Immunogen information

Gene ID:

7529/7534

Uniprot

P31946/P63104

Synonyms:

GW128; HEL-S-1; HS1; KCIP-1; YWHAA; 14-3-3

Antibody Information

Recommended dilutions:

WB 1:500 - 1:2000 IF 1:50 - 1:200

Source:

Rabbit

Isotype:

IgG

Purification:

Affinity purification

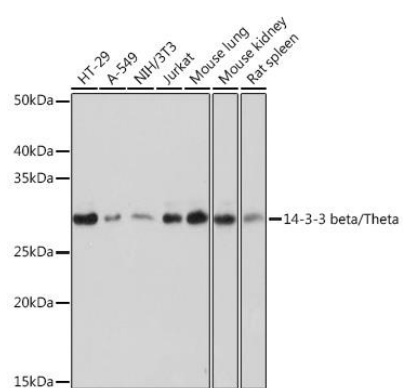
Immunogen:

A synthesized peptide derived from human 14-3-3 beta/zeta

Storage:

Store at -20°C. Avoid freeze / thaw cycles. Buffer: PBS with 0.02% sodium azide, 0.05% BSA, 50% glycerol, pH7.3.

Product Images



Western blot - 14-3-3 beta/zeta Rabbit mAb (CAB9152)