

# EBNA1BP2 Rabbit Polyclonal Antibody



CAB9153

## Product Information

### Size:

20uL, 50uL, 100uL, 200uL

### Observed MW:

40kDa

### Calculated MW:

34kDa

### Applications:

WB IF

### Reactivity:

Human, Mouse, Rat

## Antibody Information

### Recommended dilutions:

WB 1:1000 - 1:2000 IF 1:50  
- 1:200

### Source:

Rabbit

### Isotype:

IgG

### Purification:

Affinity purification

## Protein Background

### Immunogen information

#### Gene ID:

10969

#### Uniprot

Q99848

#### Synonyms:

EBNA1BP2; EBP2; NOBP; P40

#### Immunogen:

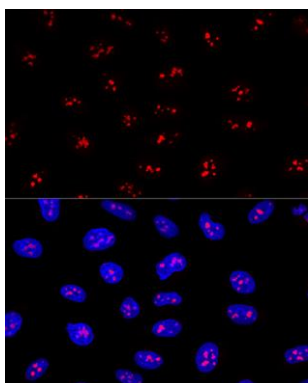
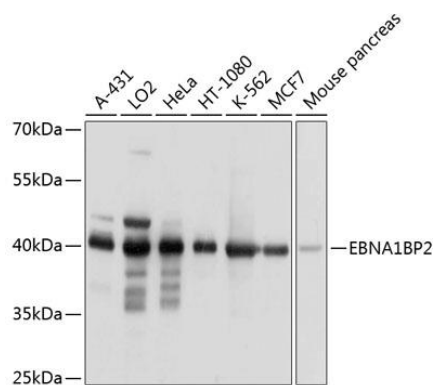
Recombinant fusion protein containing a sequence corresponding to amino acids 1-306 of human EBNA1BP2 (NP\_006815.2).

#### Storage:

Store at -20°C. Avoid freeze / thaw cycles. Buffer: PBS with 0.02% sodium azide, 50% glycerol, pH7.3.

## Product Images

---



Western blot analysis of extracts of various cell lines, using EBNA1BP2 antibody (CAB9153) at 1:1000 dilution. Secondary antibody: HRP Goat Anti-Rabbit IgG (H+L) (CABS014) at 1:10000 dilution. Lysates/proteins: 25ug per lane. Blocking buffer: 3% nonfat dry milk in TBST. Detection: ECL Basic Kit (CABM00020). Exposure time: 1s.

Confocal immunofluorescence analysis of U2OS cells using EBNA1BP2 Polyclonal Antibody (CAB9153) at dilution of 1:200. Blue: DAPI for nuclear staining.