

# 14-3-3 gamma Rabbit Monoclonal Antibody



CAB9162

## Product Information

### Size:

20uL, 50uL, 100uL, 200uL

### Observed MW:

28KDa

### Calculated MW:

28kDa

### Applications:

WB IHC

### Reactivity:

Human, Mouse, Rat

## Antibody Information

### Recommended dilutions:

WB 1:500 - 1:2000 IHC 1:50  
- 1:200

### Source:

Rabbit

### Isotype:

IgG

### Purification:

Affinity purification

## Protein Background

This gene product belongs to the 14-3-3 family of proteins which mediate signal transduction by binding to phosphoserine-containing proteins. This highly conserved protein family is found in both plants and mammals, and this protein is 100% identical to the rat ortholog. It is induced by growth factors in human vascular smooth muscle cells, and is also highly expressed in skeletal and heart muscles, suggesting an important role for this protein in muscle tissue. It has been shown to interact with RAF1 and protein kinase C, proteins involved in various signal transduction pathways. [provided by RefSeq, Jul 2008]

## Immunogen information

### Gene ID:

7532

### Uniprot

P61981

### Synonyms:

14-3-3GAMMA; PPP1R170

### Immunogen:

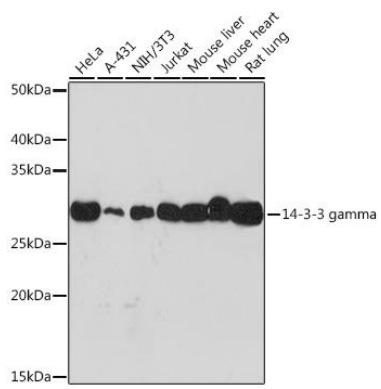
A synthesized peptide derived from human 14-3-3 gamma

### Storage:

Store at -20°C. Avoid freeze / thaw cycles. Buffer: PBS with 0.02% sodium azide, 0.05% BSA, 50% glycerol, pH7.3.

## Product Images

---



Western blot - 14-3-3 gamma Rabbit mAb (CAB9162)