

# GINS2 Rabbit Polyclonal Antibody



CAB9172

## Product Information

### Size:

20uL, 50uL, 100uL, 200uL

### Observed MW:

21kDa

### Calculated MW:

21kDa

### Applications:

WB

### Reactivity:

Human

### Category

Polyclonal Antibodies

## Antibody Information

### Recommended dilutions:

WB 1:500 - 1:2000

### Source:

Rabbit

### Isotype:

IgG

### Purification:

Affinity purification

## Protein Background

The yeast heterotetrameric GINS complex is made up of Sld5 (GINS4; MIM 610611), Psf1 (GINS1; MIM 610608), Psf2, and Psf2, and Psf3 (GINS3; MIM 610610). The formation of this complex is essential for the initiation of DNA replication in yeast and Xenopus egg extracts. See GINS1 for additional information about the GINS complex.

## Immunogen information

### Gene ID:

51659

### Uniprot

Q9Y248

### Synonyms:

GINS2; HSPC037; PSF2; Pfs2

### Immunogen:

Recombinant fusion protein containing a sequence corresponding to amino acids 1-185 of human GINS2 (NP\_057179.1).

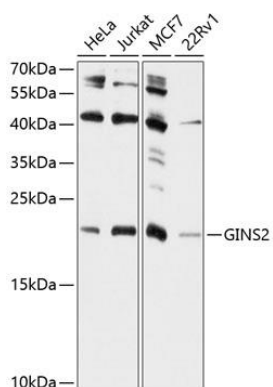
### Storage:

Store at -20°C. Avoid freeze / thaw cycles.

Buffer: PBS with 0.02% sodium azide, 50% glycerol, pH7.3.

## Product Images

---



Western blot analysis of extracts of various cell lines, using GINS2 antibody (CAB9172) at 1:1000 dilution.

Secondary antibody: HRP Goat Anti-Rabbit IgG (H+L) (CABS014) at 1:10000 dilution.

Lysates/proteins: 25ug per lane.

Blocking buffer: 3% non-fat dry milk in TBST.

Detection: ECL Basic Kit (AbGn00020).

Exposure time: 90s.