

# RPL26L1 Rabbit Polyclonal Antibody



CAB9192

---

## Product Information

### Size:

20uL, 50uL, 100uL, 200uL

### Observed MW:

20kDa

### Calculated MW:

17kDa

### Applications:

WB

### Reactivity:

Human

## Antibody Information

### Recommended dilutions:

WB 1:200 - 1:2000

### Source:

Rabbit

### Isotype:

IgG

### Purification:

Affinity purification

## Protein Background

This gene encodes a protein that shares high sequence similarity with ribosomal protein L26. Alternative splicing results in multiple transcript variants encoding the same protein.

## Immunogen information

### Gene ID:

51121

### Uniprot

Q9UNX3

### Synonyms:

RPL26L1; RPL26P1

### Immunogen:

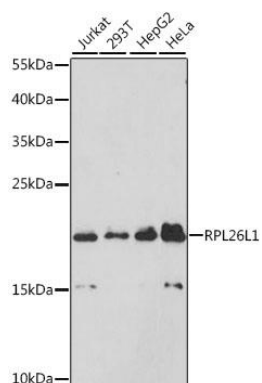
Recombinant fusion protein containing a sequence corresponding to amino acids 1-145 of human RPL26L1 (NP\_057177.1).

### Storage:

Store at -20°C. Avoid freeze / thaw cycles. Buffer: PBS with 0.02% sodium azide, 50% glycerol, pH7.3.

## Product Images

---



Western blot analysis of extracts of various cell lines, using RPL26L1 antibody (CAB9192) at 1:3000 dilution. Secondary antibody: HRP Goat Anti-Rabbit IgG (H+L) (CABS014) at 1:10000 dilution. Lysates/proteins: 25ug per lane. Blocking buffer: 3% nonfat dry milk in TBST. Detection: ECL Enhanced Kit (CABM00021). Exposure time: 90s.