

PSPC1 Rabbit Polyclonal Antibody



CAB9209

Product Information

Size:

20uL, 50uL, 100uL, 200uL

Observed MW:

65kDa

Calculated MW:

45kDa/58kDa

Applications:

WB IHC IP

Reactivity:

Human, Mouse, Rat

Antibody Information

Recommended dilutions:

WB 1:500 - 1:2000 IHC 1:50
- 1:200 IP 1:50 - 1:200

Source:

Rabbit

Isotype:

IgG

Purification:

Affinity purification

Protein Background

This gene encodes a nucleolar protein that localizes to punctate subnuclear structures that occur close to splicing speckles, known as paraspeckles. These paraspeckles are composed of RNA-protein structures that include a non-coding RNA, NEAT1/Men epsilon/beta, and the Drosophila Behavior Human Splicing family of proteins, which include the product of this gene and the P54NRB/NONO and PSF/SFPQ proteins. Paraspeckles may function in the control of gene expression via an RNA nuclear retention mechanism. The protein encoded by this gene is found in paraspeckles in transcriptionally active cells, but it localizes to unique cap structures at the nucleolar periphery when RNA polymerase II transcription is inhibited, or during telophase. Alternative splicing of this gene results in multiple transcript variants. A related pseudogene, which is also located on chromosome 13, has been identified.

Immunogen information

Gene ID:

55269

Uniprot

Q8WXF1

Synonyms:

PSPC1; PSP1

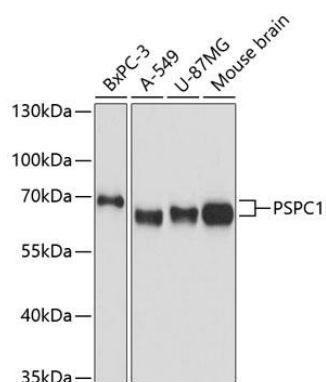
Immunogen:

Recombinant fusion protein containing a sequence corresponding to amino acids 1-70 of human PSPC1 (NP_001035879.1).

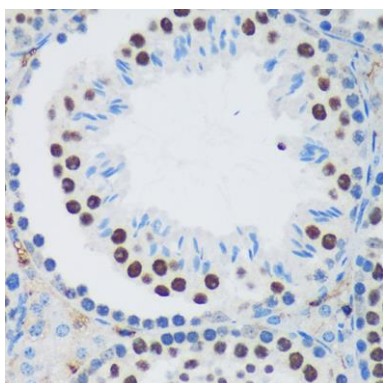
Storage:

Store at -20°C. Avoid freeze / thaw cycles. Buffer: PBS with 0.02% sodium azide, 50% glycerol, pH7.3.

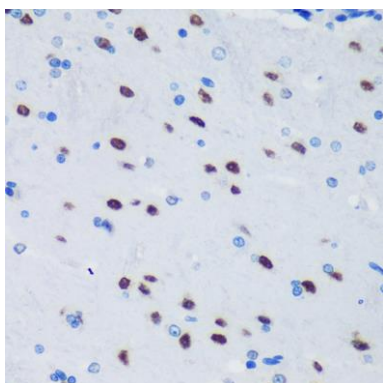
Product Images



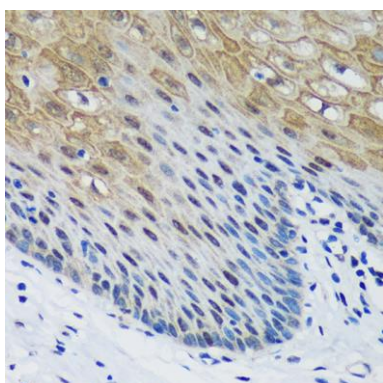
Western blot analysis of extracts of various cell lines, using PSPC1 antibody (CAB9209) at 1:3000 dilution. Secondary antibody: HRP Goat Anti-Rabbit IgG (H+L) (CABS014) at 1:10000 dilution. Lysates/proteins: 25ug per lane. Blocking buffer: 3% nonfat dry milk in TBST. Detection: ECL Basic Kit (CABM00020). Exposure time: 10s.



Immunohistochemistry of paraffin-embedded Mouse testis using PSPC1 Rabbit pAb (CAB9209) at dilution of 1:100 (40x lens).



Immunohistochemistry of paraffin-embedded Rat brain using PSPC1 Rabbit pAb (CAB9209) at dilution of 1:100 (40x lens).



Immunohistochemistry of paraffin-embedded Human esophageal using PSPC1 Rabbit pAb (CAB9209) at dilution of 1:100 (40x lens).