

# TRMT6 Rabbit Polyclonal Antibody



CAB9212

---

## Product Information

### Size:

20uL, 50uL, 100uL, 200uL

### Observed MW:

60kDa

### Calculated MW:

36kDa/40kDa/44kDa/55kDa

### Applications:

WB

### Reactivity:

Human

## Protein Background

This gene encodes a member of the tRNA methyltransferase 6 protein family. A similar protein in yeast is part of a two component methyltransferase, which is involved in the posttranslational modification that produces the modified nucleoside 1-methyladenosine in tRNAs. Modified 1-methyladenosine influences initiator methionine stability and may be involved in the replication of human immunodeficiency virus type 1. Alternative splicing results in multiple transcript variants.

## Immunogen information

### Gene ID:

51605

### Uniprot

Q9UJA5

### Synonyms:

TRMT6; CGI-09; GCD10; Gcd10p

## Antibody Information

### Recommended dilutions:

WB 1:500 - 1:2000

### Source:

Rabbit

### Isotype:

IgG

### Purification:

Affinity purification

### Immunogen:

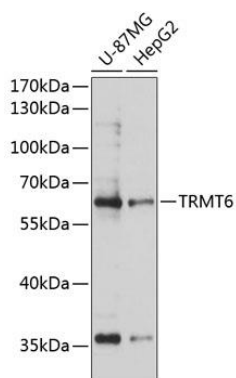
Recombinant fusion protein containing a sequence corresponding to amino acids 1-200 of human TRMT6 (NP\_057023.2).

### Storage:

Store at -20°C. Avoid freeze / thaw cycles. Buffer: PBS with 0.02% sodium azide, 50% glycerol, pH7.3.

## Product Images

---



Western blot analysis of extracts of various cell lines, using TRMT6 antibody (CAB9212) at 1:3000 dilution. Secondary antibody: HRP Goat Anti-Rabbit IgG (H+L) (CABS014) at 1:10000 dilution. Lysates/proteins: 25ug per lane. Blocking buffer: 3% nonfat dry milk in TBST. Detection: ECL Basic Kit (CABM00020). Exposure time: 10s.