

HBD Rabbit Polyclonal Antibody



CAB9220

Product Information

Size:

20uL, 50uL, 100uL, 200uL

Observed MW:

13kDa

Calculated MW:

16kDa

Applications:

WB

Reactivity:

Mouse, Rat

Protein Background

The delta (HBD) and beta (HBB) genes are normally expressed in the adult: two alpha chains plus two beta chains constitute HbA, which in normal adult life comprises about 97% of the total hemoglobin. Two alpha chains plus two delta chains constitute HbA-2, which with HbF comprises the remaining 3% of adult hemoglobin. Five beta-like globin genes are found within a 45 kb cluster on chromosome 11 in the following order: 5'-epsilon--Ggamma--Agamma--delta--beta-3'. Mutations in the delta-globin gene are associated with beta-thalassemia.

Immunogen information

Gene ID:

3045

Uniprot

P02042

Synonyms:

HBD

Antibody Information

Recommended dilutions:

WB 1:500 - 1:2000

Source:

Rabbit

Isotype:

IgG

Purification:

Affinity purification

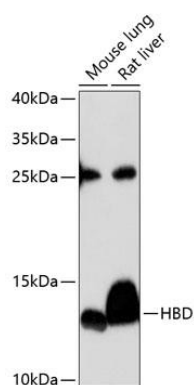
Immunogen:

Recombinant fusion protein containing a sequence corresponding to amino acids 1-147 of human HBD (NP_000510.1).

Storage:

Store at -20°C. Avoid freeze / thaw cycles. Buffer: PBS with 0.02% sodium azide, 50% glycerol, pH7.3.

Product Images



Western blot analysis of extracts of various cell lines, using HBD antibody (CAB9220) at 1:3000 dilution. Secondary antibody: HRP Goat Anti-Rabbit IgG (H+L) (CABS014) at 1:10000 dilution. Lysates/proteins: 25ug per lane. Blocking buffer: 3% nonfat dry milk in TBST. Detection: ECL Enhanced Kit (CABM00021). Exposure time: 90s.