

SETD7 Rabbit Monoclonal Antibody



CAB9225

Product Information

Size:

20uL, 50uL, 100uL, 200uL

Observed MW:

48KDa

Calculated MW:

41kDa

Applications:

WB

Reactivity:

Human, Mouse, Rat

Antibody Information

Recommended dilutions:

WB 1:500 - 1:2000

Source:

Rabbit

Isotype:

IgG

Purification:

Affinity purification

Protein Background

Immunogen information

Gene ID:

80854

Uniprot

Q8WTS6

Synonyms:

KMT7; SET7; SET7/9; SET9

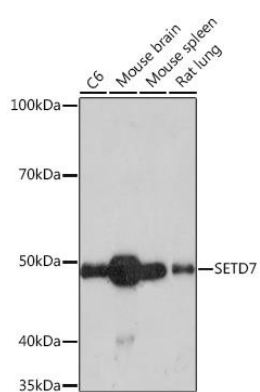
Immunogen:

A synthesized peptide derived from human SETD7

Storage:

Store at -20°C. Avoid freeze / thaw cycles. Buffer: PBS with 0.02% sodium azide, 0.05% BSA, 50% glycerol, pH7.3.

Product Images



Western blot - SETD7 Rabbit mAb (CAB9225)