

# C1QC Rabbit Polyclonal Antibody



CAB9227

## Product Information

### Size:

20uL, 50uL, 100uL, 200uL

### Observed MW:

26kDa

### Calculated MW:

25kDa

### Applications:

WB IHC

### Reactivity:

Human

## Protein Background

This gene encodes a major constituent of the human complement subcomponent C1q. C1q associates with C1r and C1s in order to yield the first component of the serum complement system. A deficiency in C1q has been associated with lupus erythematosus and glomerulonephritis. C1q is composed of 18 polypeptide chains: six A-chains, six B-chains, and six C-chains. Each chain contains a collagen-like region located near the N-terminus, and a C-terminal globular region. The A-, B-, and C-chains are arranged in the order A-C-B on chromosome 1. This gene encodes the C-chain polypeptide of human complement subcomponent C1q. Alternatively spliced transcript variants that encode the same protein have been found for this gene.

## Immunogen information

### Gene ID:

714

### Uniprot

P02747

## Antibody Information

### Recommended dilutions:

WB 1:500 - 1:2000 IHC 1:50  
- 1:100

### Source:

Rabbit

### Isotype:

IgG

### Purification:

Affinity purification

### Synonyms:

C1QC; C1Q-C; C1QG

### Immunogen:

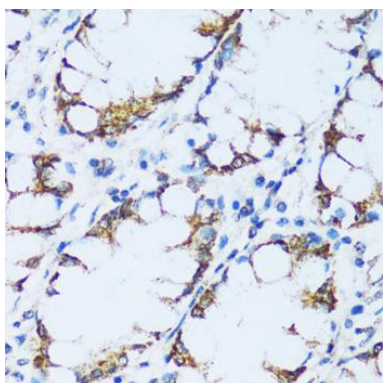
A synthetic peptide corresponding to a sequence within amino acids 50-150 of human C1QC (NP\_001107573.1).

### Storage:

Store at -20°C. Avoid freeze / thaw cycles. Buffer: PBS with 0.02% sodium azide, 50% glycerol, pH7.3.

## Product Images

---



Immunohistochemistry of paraffin-embedded human colon using C1QC antibody (CAB9227) at dilution of 1:100 (40x lens).