

# PIM2 Rabbit Monoclonal Antibody



CAB9230

---

## Product Information

### Size:

20uL, 50uL, 100uL, 200uL

### Observed MW:

40KDa

### Calculated MW:

37kDa

### Applications:

WB

### Reactivity:

Human

## Protein Background

This gene encodes a protooncogene that acts as a serine/threonine protein kinase. Studies determined the encoded protein functions to prevent apoptosis and to promote cell survival.[provided by RefSeq, Nov 2009]

## Immunogen information

### Gene ID:

11040

### Uniprot

Q9P1W9

### Synonyms:

## Antibody Information

### Recommended dilutions:

WB 1:500 - 1:2000

### Source:

Rabbit

### Isotype:

IgG

### Purification:

Affinity purification

### Immunogen:

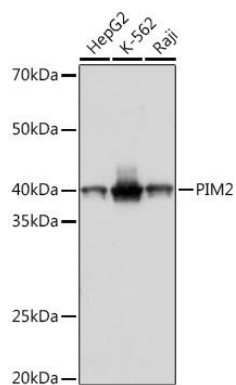
A synthesized peptide derived from human PIM2

### Storage:

Store at -20°C. Avoid freeze / thaw cycles. Buffer: PBS with 0.02% sodium azide, 0.05% BSA, 50% glycerol, pH7.3.

## Product Images

---



Western blot - PIM2 Rabbit mAb (CAB9230)