

CTIP1 Rabbit Monoclonal Antibody



CAB9231

Product Information

Size:

20uL, 50uL, 100uL, 200uL

Observed MW:

100KDa

Calculated MW:

120kDa

Applications:

WB IHC

Reactivity:

Human, Mouse, Rat

Antibody Information

Recommended dilutions:

WB 1:500 - 1:2000 IHC 1:50
- 1:200

Source:

Rabbit

Isotype:

IgG

Purification:

Affinity purification

Protein Background

This gene encodes a C2H2 type zinc-finger protein by its similarity to the mouse Bcl11a/Evi9 protein. The corresponding mouse gene is a common site of retroviral integration in myeloid leukemia, and may function as a leukemia disease gene, in part, through its interaction with BCL6. During hematopoietic cell differentiation, this gene is down-regulated. It is possibly involved in lymphoma pathogenesis since translocations associated with B-cell malignancies also deregulates its expression. Multiple transcript variants encoding several different isoforms have been found for this gene. [provided by RefSeq, Jul 2008]

Immunogen information

Gene ID:

53335

Uniprot

Q9H165

Synonyms:

BCL11A-L; BCL11A-S; BCL11A-XL; BCL11a-M; CTIP1; DILOS; EVI9;
HBFQTL5; ZNF856

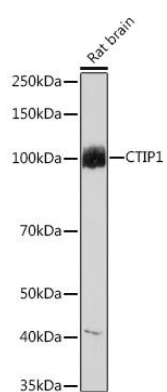
Immunogen:

A synthesized peptide derived from human CTIP1

Storage:

Store at -20°C. Avoid freeze / thaw cycles. Buffer: PBS with 0.02% sodium azide, 0.05% BSA, 50% glycerol, pH7.3.

Product Images



Western blot - CTIP1 Rabbit mAb (CAB9231)