

RWDD1 Rabbit Polyclonal Antibody



CAB9237

Product Information

Size:

20uL, 50uL, 100uL, 200uL

Observed MW:

28kDa

Calculated MW:

17kDa/27kDa

Applications:

WB

Reactivity:

Mouse, Rat

Antibody Information

Recommended dilutions:

WB 1:500 - 1:2000

Source:

Rabbit

Isotype:

IgG

Purification:

Affinity purification

Protein Background

Immunogen information

Gene ID:

51389

Uniprot

Q9H446

Synonyms:

RWDD1; CGI-24; PTD013

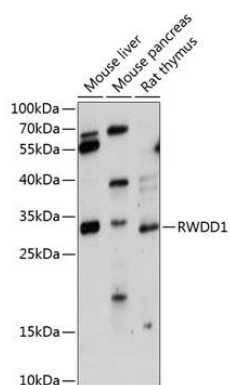
Immunogen:

Recombinant fusion protein containing a sequence corresponding to amino acids 1-90 of human RWDD1 (NP_057036.2).

Storage:

Store at -20°C. Avoid freeze / thaw cycles. Buffer: PBS with 0.02% sodium azide, 50% glycerol, pH7.3.

Product Images



Western blot analysis of extracts of various cell lines, using RWDD1 antibody (CAB9237) at 1:3000 dilution. Secondary antibody: HRP Goat Anti-Rabbit IgG (H+L) (CABS014) at 1:10000 dilution. Lysates/proteins: 25ug per lane. Blocking buffer: 3% nonfat dry milk in TBST. Detection: ECL Enhanced Kit (CABM00021). Exposure time: 90s.