

GNPDA2 Rabbit Polyclonal Antibody



CAB9245

Product Information

Size:

20uL, 50uL, 100uL, 200uL

Observed MW:

31kDa

Calculated MW:

22kDa/27kDa/29kDa/30kDa/
31kDa

Applications:

WB

Reactivity:

Human, Mouse

Protein Background

The protein encoded by this gene is an allosteric enzyme that catalyzes the reversible reaction converting D-glucosamine-6-phosphate into D-fructose-6-phosphate and ammonium. Variations of this gene have been reported to be associated with influencing body mass index and susceptibility to obesity. A pseudogene of this gene is located on chromosome 9. Alternative splicing results in multiple transcript variants that encode different protein isoforms.

Immunogen information

Gene ID:

132789

Uniprot

Q8TDQ7

Synonyms:

GNPDA2; GNP2; SB52

Antibody Information

Recommended dilutions:

WB 1:200 - 1:2000

Source:

Rabbit

Isotype:

IgG

Purification:

Affinity purification

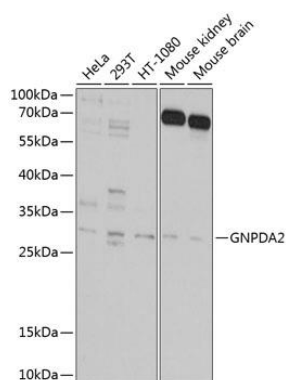
Immunogen:

Recombinant fusion protein containing a sequence corresponding to amino acids 1-190 of human GNPDA2 (NP_612208.1).

Storage:

Store at -20°C. Avoid freeze / thaw cycles. Buffer: PBS with 0.02% sodium azide, 50% glycerol, pH7.3.

Product Images



Western blot analysis of extracts of various cell lines, using GNPDA2 antibody (CAB9245) at 1:1000 dilution. Secondary antibody: HRP Goat Anti-Rabbit IgG (H+L) (CABS014) at 1:10000 dilution. Lysates/proteins: 25ug per lane. Blocking buffer: 3% nonfat dry milk in TBST. Detection: ECL Basic Kit (CABM00020). Exposure time: 30s.