

# SQRDL Rabbit Polyclonal Antibody



CAB9256

---

## Product Information

### Size:

20uL, 50uL, 100uL, 200uL

### Observed MW:

48kDa

### Calculated MW:

49kDa

### Applications:

WB

### Reactivity:

Human, Mouse, Rat

## Protein Background

The protein encoded by this gene may function in mitochondria to catalyze the conversion of sulfide to persulfides, thereby decreasing toxic concentrations of sulfide. Alternative splicing results in multiple transcript variants that encode the same protein.

## Immunogen information

### Gene ID:

58472

### Uniprot

Q9Y6N5

### Synonyms:

SQOR; CGI-44; PRO1975; SQR; SQRDL

## Antibody Information

### Recommended dilutions:

WB 1:1000 - 1:2000

### Source:

Rabbit

### Isotype:

IgG

### Purification:

Affinity purification

### Immunogen:

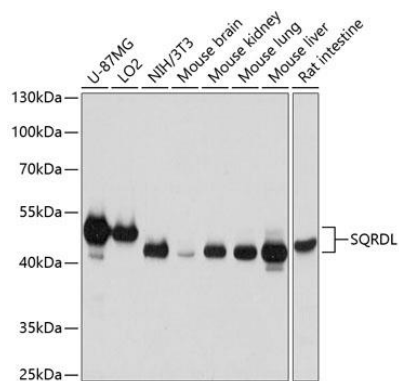
Recombinant fusion protein containing a sequence corresponding to amino acids 211-450 of human SQRDL (NP\_067022.1).

### Storage:

Store at -20°C. Avoid freeze / thaw cycles. Buffer: PBS with 0.02% sodium azide, 50% glycerol, pH7.3.

## Product Images

---



Western blot analysis of extracts of various cell lines, using SQRDL antibody (CAB9256) at 1:3000 dilution. Secondary antibody: HRP Goat Anti-Rabbit IgG (H+L) (CABS014) at 1:10000 dilution. Lysates/proteins: 25ug per lane. Blocking buffer: 3% nonfat dry milk in TBST. Detection: ECL Basic Kit (CABM00020). Exposure time: 10s.