

KDM4A Rabbit Monoclonal Antibody



CAB9267

Product Information

Size:

20uL, 50uL, 100uL, 200uL

Observed MW:

150KDa

Calculated MW:

150kDa

Applications:

WB

Reactivity:

Human, Mouse

Protein Background

This gene is a member of the Jumonji domain 2 (JMJD2) family and encodes a protein containing a JmjN domain, a JmjC domain, a JD2H domain, two TUDOR domains, and two PHD-type zinc fingers. This nuclear protein functions as a trimethylation-specific demethylase, converting specific trimethylated histone residues to the dimethylated form, and as a transcriptional repressor. [provided by RefSeq, Apr 2009]

Immunogen information

Gene ID:

9682

Uniprot

O75164

Synonyms:

JHDM3A; JMJD2; JMJD2A; TDRD14A

Antibody Information

Recommended dilutions:

WB 1:500 - 1:2000

Source:

Rabbit

Isotype:

IgG

Purification:

Affinity purification

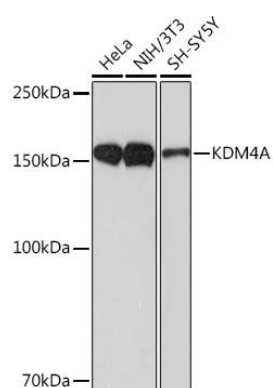
Immunogen:

A synthesized peptide derived from human KDM4A

Storage:

Store at -20°C. Avoid freeze / thaw cycles. Buffer: PBS with 0.02% sodium azide, 0.05% BSA, 50% glycerol, pH7.3.

Product Images



Western blot - KDM4A Rabbit mAb (CAB9267)