

SST Rabbit Polyclonal Antibody



CAB9274

Product Information

Size:

20uL, 50uL, 100uL, 200uL

Observed MW:

17kDa

Calculated MW:

12kDa

Applications:

WB IHC IF IP

Reactivity:

Human, Mouse, Rat

Antibody Information

Recommended dilutions:

WB 1:200 - 1:2000 IHC 1:50
- 1:200 IF 1:50 - 1:200 IP
1:50 - 1:200

Source:

Rabbit

Isotype:

IgG

Purification:

Affinity purification

Protein Background

The hormone somatostatin has active 14 aa and 28 aa forms that are produced by alternate cleavage of the single preproprotein encoded by this gene. Somatostatin is expressed throughout the body and inhibits the release of numerous secondary hormones by binding to high-affinity G-protein-coupled somatostatin receptors. This hormone is an important regulator of the endocrine system through its interactions with pituitary growth hormone, thyroid stimulating hormone, and most hormones of the gastrointestinal tract. Somatostatin also affects rates of neurotransmission in the central nervous system and proliferation of both normal and tumorigenic cells.

Immunogen information

Gene ID:

6750

Uniprot

P61278

Synonyms:

SST; SMST

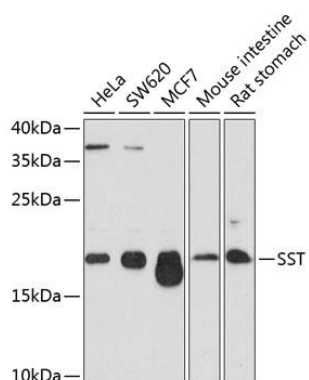
Immunogen:

A synthetic peptide corresponding to a sequence within amino acids 50 to the C-terminus of human SST (NP_001039.1).

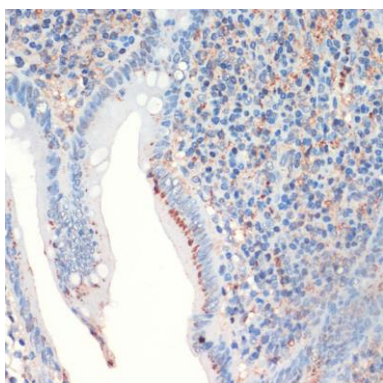
Storage:

Store at -20°C. Avoid freeze / thaw cycles. Buffer: PBS with 0.02% sodium azide, 50% glycerol, pH7.3.

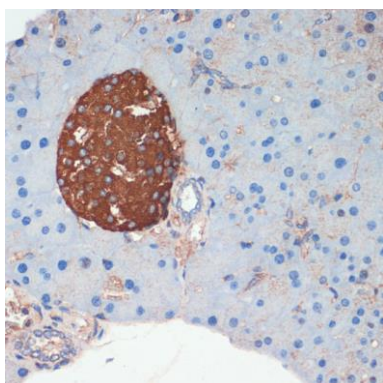
Product Images



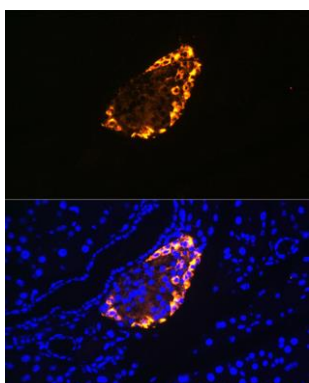
Western blot analysis of extracts of various cell lines, using SST antibody (CAB9274) at 1:1000 dilution. Secondary antibody: HRP Goat Anti-Rabbit IgG (H+L) (CABS014) at 1:10000 dilution. Lysates/proteins: 25ug per lane. Blocking buffer: 3% nonfat dry milk in TBST. Detection: ECL Basic Kit (CABM00020). Exposure time: 90s.



Immunohistochemistry of paraffin-embedded human appendix using SST antibody (CAB9274) at dilution of 1:200 (40x lens).



Immunohistochemistry of paraffin-embedded mouse pancreas using SST antibody (CAB9274) at dilution of 1:200 (40x lens).



Immunofluorescence analysis of rat pancreas using SST Rabbit pAb (CAB9274) at dilution of 1:100 (40x lens). Blue: DAPI for nuclear staining.