

VPS35 Rabbit Monoclonal Antibody



CAB9278

Product Information

Size:

20uL, 50uL, 100uL, 200uL

Observed MW:

90kDa

Calculated MW:

92kDa

Applications:

WB

Reactivity:

Human, Mouse, Rat

Antibody Information

Recommended dilutions:

WB 1:500 - 1:2000

Source:

Rabbit

Isotype:

IgG

Purification:

Affinity purification

Protein Background

This gene belongs to a group of vacuolar protein sorting (VPS) genes. The encoded protein is a component of a large multimeric complex, termed the retromer complex, involved in retrograde transport of proteins from endosomes to the trans-Golgi network. The close structural similarity between the yeast and human proteins that make up this complex suggests a similarity in function. Expression studies in yeast and mammalian cells indicate that this protein interacts directly with VPS35, which serves as the core of the retromer complex. [provided by RefSeq, Jul 2008]

Immunogen information

Gene ID:

55737

Uniprot

Q96QK1

Synonyms:

MEM3; PARK17

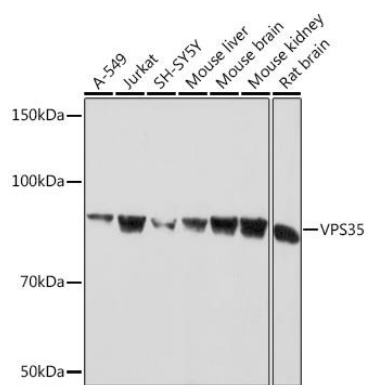
Immunogen:

A synthesized peptide derived from human VPS35

Storage:

Store at -20°C. Avoid freeze / thaw cycles. Buffer: PBS with 0.02% sodium azide, 0.05% BSA, 50% glycerol, pH7.3.

Product Images



Western blot - VPS35 Rabbit mAb (CAB9278)