

EHBP1 Rabbit Polyclonal Antibody



CAB9286

Product Information

Size:

20uL, 50uL, 100uL, 200uL

Observed MW:

180kDa

Calculated MW:

132kDa/136kDa/140kDa

Applications:

WB

Reactivity:

Human, Mouse, Rat

Protein Background

This gene encodes an Eps15 homology domain binding protein. The encoded protein may play a role in endocytic trafficking. A single nucleotide polymorphism in this gene is associated with an aggressive form of prostate cancer. Alternate splicing results in multiple transcript variants.

Immunogen information

Gene ID:

23301

Uniprot

Q8NDI1

Synonyms:

EHBP1; HPC12; NACSIN

Antibody Information

Recommended dilutions:

WB 1:500 - 1:2000

Source:

Rabbit

Isotype:

IgG

Purification:

Affinity purification

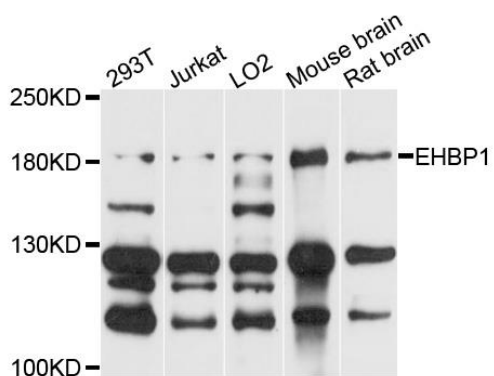
Immunogen:

Recombinant fusion protein containing a sequence corresponding to amino acids 1-100 of human EHBP1 (NP_056067.2).

Storage:

Store at -20°C. Avoid freeze / thaw cycles. Buffer: PBS with 0.02% sodium azide, 50% glycerol, pH7.3.

Product Images



Western blot analysis of extracts of various cell lines, using EHBP1 antibody (CAB9286) at 1:1000 dilution. Secondary antibody: HRP Goat Anti-Rabbit IgG (H+L) (CABS014) at 1:10000 dilution. Lysates/proteins: 25ug per lane. Blocking buffer: 3% nonfat dry milk in TBST. Detection: ECL Enhanced Kit (CABM00021). Exposure time: 60s.