

GTF3C4 Rabbit Polyclonal Antibody



CAB9287

Product Information

Size:

20uL, 50uL, 100uL, 200uL

Observed MW:

95kDa

Calculated MW:

91kDa

Applications:

WB IHC IF

Reactivity:

Human, Rat

Antibody Information

Recommended dilutions:

WB 1:500 - 1:2000 IHC 1:50
- 1:200 IF 1:50 - 1:200

Source:

Rabbit

Isotype:

IgG

Purification:

Affinity purification

Protein Background

Immunogen information

Gene ID:

9329

Uniprot

Q9UKN8

Synonyms:

GTF3C4; KAT12; TF3C-delta; TFIII90; TFIIC290; TFIIC90;
TFIICDELTA

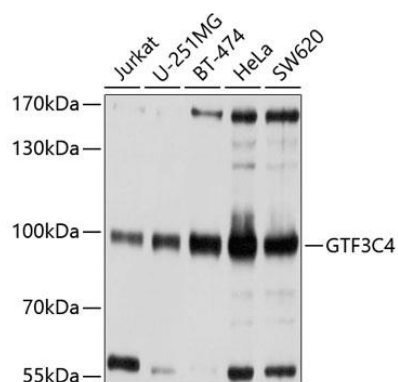
Immunogen:

Recombinant fusion protein containing a sequence corresponding to amino acids 583-822 of human GTF3C4 (NP_036336.2).

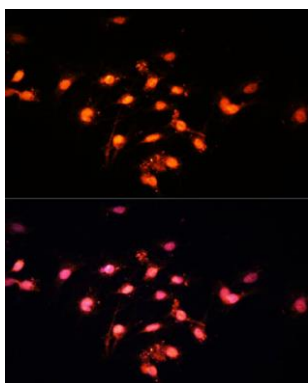
Storage:

Store at -20°C. Avoid freeze / thaw cycles. Buffer: PBS with 0.02% sodium azide, 50% glycerol, pH7.3.

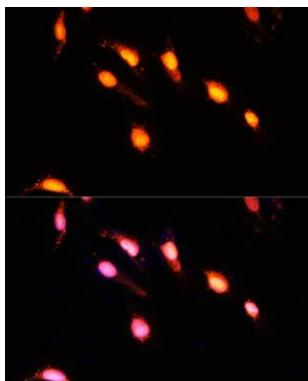
Product Images



Western blot analysis of extracts of various cell lines, using GTF3C4 antibody (CAB9287) at 1:1000 dilution. Secondary antibody: HRP Goat Anti-Rabbit IgG (H+L) (CABS014) at 1:10000 dilution. Lysates/proteins: 25ug per lane. Blocking buffer: 3% nonfat dry milk in TBST. Detection: ECL Basic Kit (CABM00020). Exposure time: 1s.



Immunofluorescence analysis of C6 cells using GTF3C4 Polyclonal Antibody (CAB9287) at dilution of 1:100 (40x lens). Blue: DAPI for nuclear staining.



Immunofluorescence analysis of U-2 OS cells using GTF3C4 Polyclonal Antibody (CAB9287) at dilution of 1:100 (40x lens). Blue: DAPI for nuclear staining.