

# CORO1A Rabbit Polyclonal Antibody



CAB9300

## Product Information

### Size:

20uL, 50uL, 100uL, 200uL

### Observed MW:

51kDa

### Calculated MW:

51kDa

### Applications:

WB IHC IF

### Reactivity:

Human, Mouse, Rat

## Protein Background

This gene encodes a member of the WD repeat protein family. WD repeats are minimally conserved regions of approximately 40 amino acids typically bracketed by gly-his and trp-asp (GH-WD), which may facilitate formation of heterotrimeric or multiprotein complexes. Members of this family are involved in a variety of cellular processes, including cell cycle progression, signal transduction, apoptosis, and gene regulation. Alternative splicing results in multiple transcript variants. A related pseudogene has been defined on chromosome 16.

## Immunogen information

### Gene ID:

11151

### Uniprot

P31146

### Synonyms:

CORO1A; CLABP; CLIPINA; HCORO1; IMD8; TACO; p57

## Antibody Information

### Recommended dilutions:

WB 1:500 - 1:2000 IHC 1:50  
- 1:200 IF 1:50 - 1:200

### Source:

Rabbit

### Isotype:

IgG

### Purification:

Affinity purification

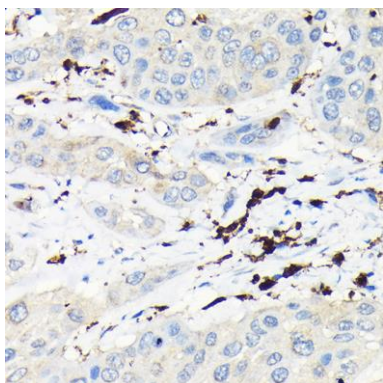
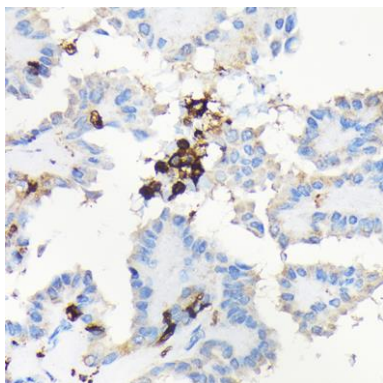
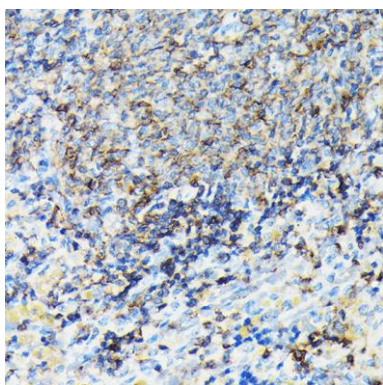
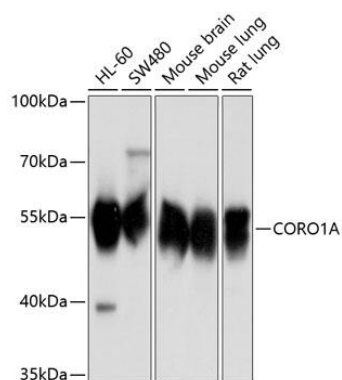
### Immunogen:

Recombinant fusion protein containing a sequence corresponding to amino acids 362-461 of human CORO1A (NP\_001180262.1).

### Storage:

Store at -20°C. Avoid freeze / thaw cycles. Buffer: PBS with 0.02% sodium azide, 50% glycerol, pH7.3.

## Product Images



Western blot analysis of extracts of various cell lines, using CORO1A antibody (CAB9300) at 1:1000 dilution. Secondary antibody: HRP Goat Anti-Rabbit IgG (H+L) (CABS014) at 1:10000 dilution. Lysates/proteins: 25ug per lane. Blocking buffer: 3% nonfat dry milk in TBST. Detection: ECL Basic Kit (CABM00020). Exposure time: 1s.

Immunohistochemistry of paraffin-embedded rat spleen using CORO1A Rabbit pAb (CAB9300) at dilution of 1:100 (40x lens).

Immunohistochemistry of paraffin-embedded human thyroid cancer using CORO1A Rabbit pAb (CAB9300) at dilution of 1:100 (40x lens).

Immunohistochemistry of paraffin-embedded human esophageal cancer using CORO1A Rabbit pAb (CAB9300) at dilution of 1:100 (40x lens).