

# PFKFB2 Rabbit Polyclonal Antibody



CAB9311

## Product Information

### Size:

20uL, 50uL, 100uL, 200uL

### Observed MW:

54kDa

### Calculated MW:

54kDa/58kDa

### Applications:

WB IF

### Reactivity:

Human, Mouse, Rat

## Antibody Information

### Recommended dilutions:

WB 1:500 - 1:2000 IF 1:50 - 1:200

### Source:

Rabbit

### Isotype:

IgG

### Purification:

Affinity purification

## Protein Background

The protein encoded by this gene is involved in both the synthesis and degradation of fructose-2, 6-bisphosphate, a regulatory molecule that controls glycolysis in eukaryotes. The encoded protein has a 6-phosphofructo-2-kinase activity that catalyzes the synthesis of fructose-2, 6-bisphosphate, and a fructose-2, 6-bisphosphatase activity that catalyzes the degradation of fructose-2, 6-bisphosphate. This protein regulates fructose-2, 6-bisphosphate levels in the heart, while a related enzyme encoded by a different gene regulates fructose-2, 6-bisphosphate levels in the liver and muscle. This enzyme functions as a homodimer. Two transcript variants encoding two different isoforms have been found for this gene.

## Immunogen information

### Gene ID:

5208

### Uniprot

O60825

### Synonyms:

PFKFB2; PFK-2/FBPase-2

### Immunogen:

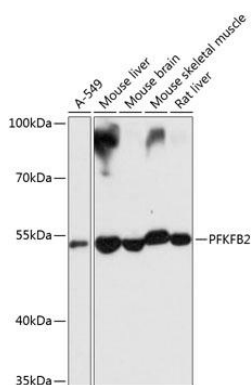
Recombinant fusion protein containing a sequence corresponding to amino acids 446-505 of human PFKFB2 (NP\_006203.2).

### Storage:

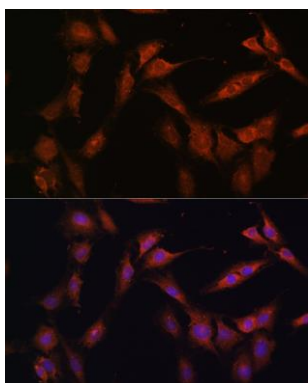
Store at -20°C. Avoid freeze / thaw cycles. Buffer: PBS with 0.02% sodium azide, 50% glycerol, pH7.3.

## Product Images

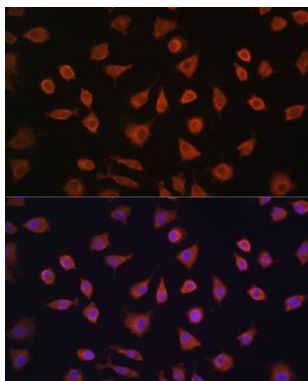
---



Western blot analysis of extracts of various cell lines, using PFKFB2 antibody (CAB9311) at 1:1000 dilution. Secondary antibody: HRP Goat Anti-Rabbit IgG (H+L) (CABS014) at 1:10000 dilution. Lysates/proteins: 25ug per lane. Blocking buffer: 3% nonfat dry milk in TBST. Detection: ECL Basic Kit (CABM00020). Exposure time: 10s.



Immunofluorescence analysis of C6 cells using PFKFB2 Rabbit pAb (CAB9311) at dilution of 1:100 (40x lens). Blue: DAPI for nuclear staining.



Immunofluorescence analysis of L929 cells using PFKFB2 Rabbit pAb (CAB9311) at dilution of 1:100 (40x lens). Blue: DAPI for nuclear staining.