

CAMSAP2 Rabbit Polyclonal Antibody



CAB9315

Product Information

Size:

20uL, 50uL, 100uL, 200uL

Observed MW:

189kDa

Calculated MW:

165kDa/166kDa/168kDa

Applications:

WB

Reactivity:

Human

Antibody Information

Recommended dilutions:

WB 1:500 - 1:2000

Source:

Rabbit

Isotype:

IgG

Purification:

Affinity purification

Protein Background

Immunogen information

Gene ID:

23271

Uniprot

Q08AD1

Synonyms:

CAMSAP2; CAMSAP1L1

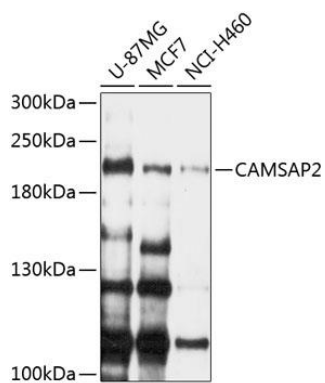
Immunogen:

Recombinant fusion protein containing a sequence corresponding to amino acids 1-150 of human CAMSAP2 (NP_982284.1).

Storage:

Store at -20°C. Avoid freeze / thaw cycles. Buffer: PBS with 0.02% sodium azide, 50% glycerol, pH7.3.

Product Images



Western blot analysis of extracts of various cell lines, using CAMSAP2 Antibody (CAB9315) at 1:1000 dilution. Secondary antibody: HRP Goat Anti-Rabbit IgG (H+L) (CABS014) at 1:10000 dilution. Lysates/proteins: 25ug per lane. Blocking buffer: 3% nonfat dry milk in TBST. Detection: ECL Enhanced Kit (CABM00021). Exposure time: 90s.