

# NUMB Rabbit Polyclonal Antibody



CAB9352

---

## Product Information

### Size:

20uL, 50uL, 100uL, 200uL

### Observed MW:

71kDa

### Calculated MW:

37kDa/48-70kDa

### Applications:

WB IF

### Reactivity:

Human, Mouse, Rat

## Protein Background

The protein encoded by this gene plays a role in the determination of cell fates during development. The encoded protein, whose degradation is induced in a proteasome-dependent manner by MDM2, is a membrane-bound protein that has been shown to associate with EPS15, LNX1, and NOTCH1. Alternative splicing results in multiple transcript variants.

## Immunogen information

### Gene ID:

8650

### Uniprot

P49757

### Synonyms:

NUMB; C14orf41; S171; c14\_5527

## Antibody Information

### Recommended dilutions:

WB 1:500 - 1:2000 IF 1:50 - 1:200

### Source:

Rabbit

### Isotype:

IgG

### Purification:

Affinity purification

### Immunogen:

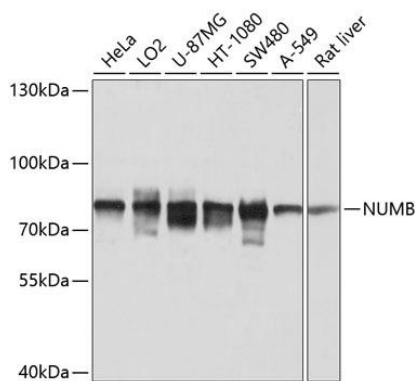
Recombinant fusion protein containing a sequence corresponding to amino acids 521-640 of human NUMB (NP\_003735.3).

### Storage:

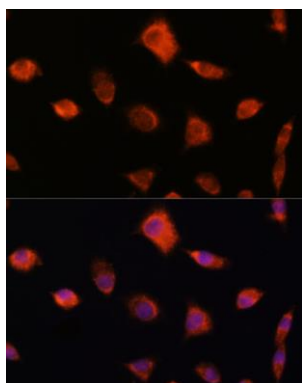
Store at -20°C. Avoid freeze / thaw cycles. Buffer: PBS with 0.02% sodium azide, 50% glycerol, pH7.3.

## Product Images

---



Western blot analysis of extracts of various cell lines, using NUMB antibody (CAB9352) at 1:1000 dilution. Secondary antibody: HRP Goat Anti-Rabbit IgG (H+L) (CABS014) at 1:10000 dilution. Lysates/proteins: 25ug per lane. Blocking buffer: 3% nonfat dry milk in TBST. Detection: ECL Basic Kit (CABM00020). Exposure time: 5s.



Immunofluorescence analysis of L929 cells using NUMB antibody (CAB9352) at dilution of 1:100. Blue: DAPI for nuclear staining.