

# SH3PXD2A Rabbit Polyclonal Antibody



CAB9363

---

## Product Information

### Size:

20µl, 50µl, 100µl, 200µl

### Observed MW:

100kDa

### Calculated MW:

102kDa/121kDa/125kDa

### Applications:

WB IF

### Reactivity:

Human, Mouse

## Protein Background

## Antibody Information

### Recommended dilutions:

WB 1:500 - 1:2000

IF 1:50 - 1:200

### Source:

Rabbit

### Isotype:

IgG

### Purification:

Affinity purification

## Immunogen information

### Gene ID:

9644

### Uniprot

Q5TCZ1

### Synonyms:

SH3PXD2A; FISH; SH3MD1; TKS5

### Immunogen:

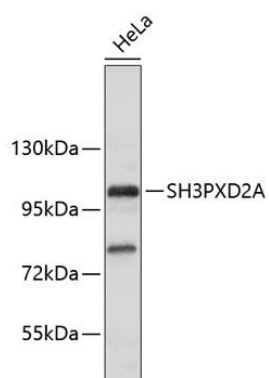
A synthetic peptide of human SH3PXD2A

### Storage:

Store at -20°C. Avoid freeze / thaw cycles. Buffer: PBS with 0.02% sodium azide, 50% glycerol, pH7.3.

## Product Images

---

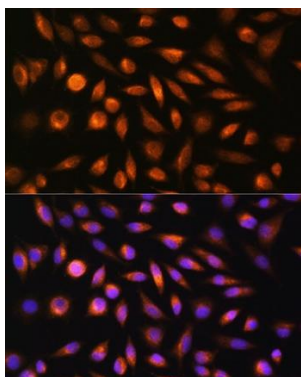


Western blot - SH3PXD2A Rabbit pAb (CAB9363).

Secondary antibody: HRP Goat Anti-Rabbit IgG (H+L) (CABS014) at 1:10000 dilution.

Lysates/proteins: 25ug per lane.

Blocking buffer: 3% non-fat dry milk in TBST



Immunofluorescence analysis of L929 cells using SH3PXD2A Rabbit pAb (CAB9363) at dilution of 1:100.

Blue: DAPI for nuclear staining.