

TNPO1 Rabbit Polyclonal Antibody



CAB9435

Product Information

Size:

20uL, 50uL, 100uL, 200uL

Observed MW:

85-102kDa

Calculated MW:

96kDa/101kDa/102kDa

Applications:

WB

Reactivity:

Human, Mouse, Rat

Antibody Information

Recommended dilutions:

WB 1:200 - 1:1000

Source:

Rabbit

Isotype:

IgG

Purification:

Affinity purification

Protein Background

This gene encodes the beta subunit of the karyopherin receptor complex which interacts with nuclear localization signals to target nuclear proteins to the nucleus. The karyopherin receptor complex is a heterodimer of an alpha subunit which recognizes the nuclear localization signal and a beta subunit which docks the complex at nucleoporins. Alternate splicing of this gene results in two transcript variants encoding different proteins.

Immunogen information

Gene ID:

3842

Uniprot

Q92973

Synonyms:

TNPO1; IPO2; KPNB2; MIP; MIP1; TRN

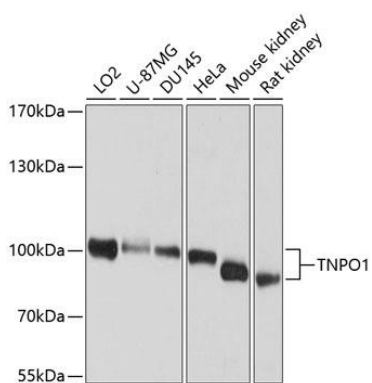
Immunogen:

A synthetic peptide corresponding to a sequence within amino acids 800 to the C-terminus of human TNPO1 (NP_002261.3).

Storage:

Store at -20°C. Avoid freeze / thaw cycles. Buffer: PBS with 0.02% sodium azide, 50% glycerol, pH7.3.

Product Images



Western blot analysis of extracts of various cell lines, using TNPO1 antibody (CAB9435) at 1:1000 dilution. Secondary antibody: HRP Goat Anti-Rabbit IgG (H+L) (CABS014) at 1:10000 dilution. Lysates/proteins: 25ug per lane. Blocking buffer: 3% nonfat dry milk in TBST. Detection: ECL Enhanced Kit (CABM00021). Exposure time: 1s.