

ITIH3 Rabbit Polyclonal Antibody



CAB9459

Product Information

Size:

20uL, 50uL, 100uL, 200uL

Observed MW:

105kDa

Calculated MW:

99kDa

Applications:

WB

Reactivity:

Human, Mouse, Rat

Protein Background

This gene encodes the heavy chain subunit of the pre-alpha-trypsin inhibitor complex. This complex may stabilize the extracellular matrix through its ability to bind hyaluronic acid. Polymorphisms of this gene may be associated with increased risk for schizophrenia and major depressive disorder. This gene is present in an inter-alpha-trypsin inhibitor family gene cluster on chromosome 3.

Immunogen information

Gene ID:

3699

Uniprot

Q06033

Synonyms:

ITIH3; H3P; ITI-HC3; SHAP

Antibody Information

Recommended dilutions:

WB 1:500 - 1:2000

Source:

Rabbit

Isotype:

IgG

Purification:

Affinity purification

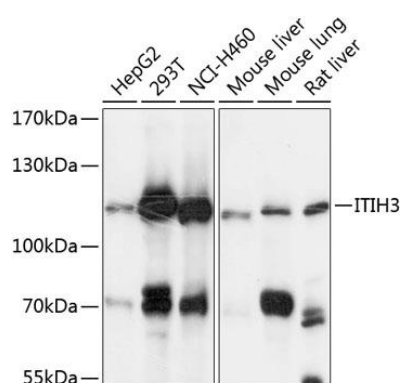
Immunogen:

Recombinant fusion protein containing a sequence corresponding to amino acids 35-180 of human ITIH3 (NP_002208.3).

Storage:

Store at -20°C. Avoid freeze / thaw cycles. Buffer: PBS with 0.02% sodium azide, 50% glycerol, pH7.3.

Product Images



Western blot analysis of extracts of various cell lines, using ITIH3 antibody (CAB9459) at 1:3000 dilution. Secondary antibody: HRP Goat Anti-Rabbit IgG (H+L) (CABS014) at 1:10000 dilution. Lysates/proteins: 25ug per lane. Blocking buffer: 3% nonfat dry milk in TBST. Detection: ECL Basic Kit (CABM00020). Exposure time: 30s.