

PLA2G6 Rabbit Polyclonal Antibody



CAB9492

Product Information

Size:

20uL, 50uL, 100uL, 200uL

Observed MW:

105kDa

Calculated MW:

46kDa/53kDa/84kDa/89kDa

Applications:

WB

Reactivity:

Rat

Antibody Information

Recommended dilutions:

WB 1:500 - 1:2000

Source:

Rabbit

Isotype:

IgG

Purification:

Affinity purification

Protein Background

The protein encoded by this gene is an A2 phospholipase, a class of enzyme that catalyzes the release of fatty acids from phospholipids. The encoded protein may play a role in phospholipid remodelling, arachidonic acid release, leukotriene and prostaglandin synthesis, fas-mediated apoptosis, and transmembrane ion flux in glucose-stimulated B-cells. Several transcript variants encoding multiple isoforms have been described, but the full-length nature of only three of them have been determined to date.

Immunogen information

Gene ID:

8398

Uniprot

O60733

Synonyms:

PLA2G6; CaI-PLA2; GVI; INAD1; IPLA2-VIA; NBIA2; NBIA2A; NBIA2B; PARK14; PLA2; PNPLA9; iPLA2; iPLA2beta

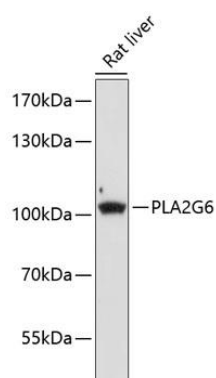
Immunogen:

A synthetic peptide corresponding to a sequence within amino acids 550-650 of human PLA2G6 (NP_003551.2).

Storage:

Store at -20°C. Avoid freeze / thaw cycles. Buffer: PBS with 0.02% sodium azide, 50% glycerol, pH7.3.

Product Images



Western blot analysis of extracts of rat liver, using PLA2G6 antibody (CAB9492) at 1:1000 dilution. Secondary antibody: HRP Goat Anti-Rabbit IgG (H+L) (CABS014) at 1:10000 dilution. Lysates/proteins: 25ug per lane. Blocking buffer: 3% nonfat dry milk in TBST. Detection: ECL Enhanced Kit (CABM00021). Exposure time: 60s.