

# IMPDH1 Rabbit Polyclonal Antibody



CAB9497

## Product Information

### Size:

20uL, 50uL, 100uL, 200uL

### Observed MW:

55KDa

### Calculated MW:

52kDa/54kDa/55kDa/60kDa/  
63kDa/64kDa

### Applications:

WB IF

### Reactivity:

Human, Mouse, Rat

## Antibody Information

### Recommended dilutions:

WB 1:1000 - 1:2000 IF 1:50  
- 1:200

### Source:

Rabbit

### Isotype:

IgG

### Purification:

Affinity purification

## Protein Background

The protein encoded by this gene acts as a homotetramer to regulate cell growth. The encoded protein is an enzyme that catalyzes the synthesis of xanthine monophosphate (XMP) from inosine-5'-monophosphate (IMP). This is the rate-limiting step in the de novo synthesis of guanine nucleotides. Defects in this gene are a cause of retinitis pigmentosa type 10 (RP10). Several transcript variants encoding different isoforms have been found for this gene.

## Immunogen information

### Gene ID:

3614

### Uniprot

P20839

### Synonyms:

IMPDH1; IMPD; IMPD1; IMPDH-I; LCA11; RP10; sWSS2608

### Immunogen:

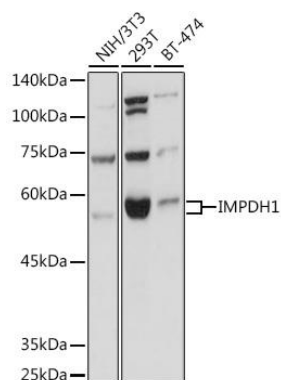
Recombinant fusion protein containing a sequence corresponding to amino acids 434-563 of human IMPDH1 (NP\_899066.1).

### Storage:

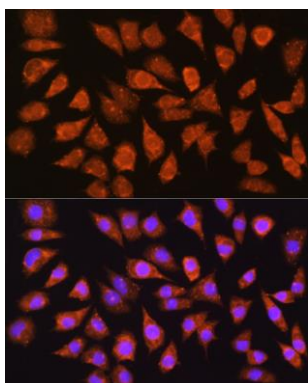
Store at -20°C. Avoid freeze / thaw cycles. Buffer: PBS with 0.02% sodium azide, 50% glycerol, pH7.3.

## Product Images

---



Western blot analysis of extracts of various cell lines, using IMPDH1 Rabbit pAb (CAB9497) at 1:1000 dilution. Secondary antibody: HRP Goat Anti-Rabbit IgG (H+L) (CABS014) at 1:10000 dilution. Lysates/proteins: 25ug per lane. Blocking buffer: 3% nonfat dry milk in TBST. Detection: ECL Basic Kit (CABM00020). Exposure time: 1s.



Immunofluorescence analysis of L929 cells using IMPDH1 Rabbit pAb (CAB9497) at dilution of 1:100 (40x lens). Blue: DAPI for nuclear staining.